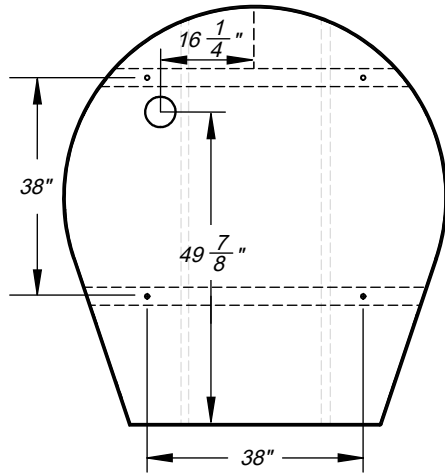


Top View Oven Mounting Layout



Clearance to Combustibles:

Allow 1" clearance all the way around side walls

14" required above completed dome

30" side clearance from door opening

36" from front of oven landing to combustibles

Non-combustible hearth

Specifications:

Wood fuel

Crate ships 74" W x 82" D x 50" H

Approx oven weight 2804 lbs.

Approx shipping weight 3389 lbs.

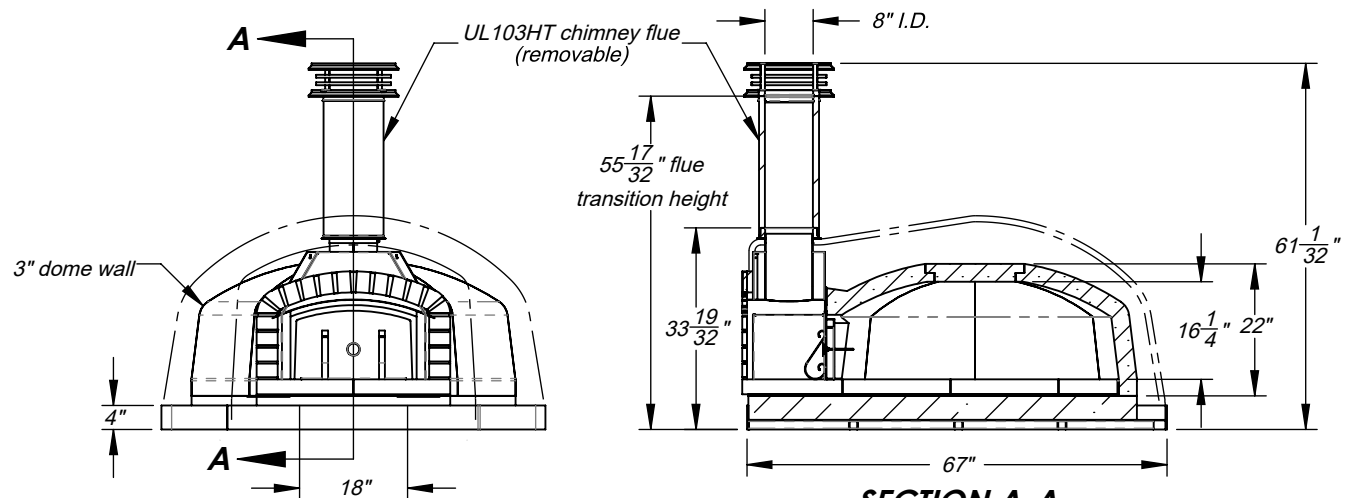
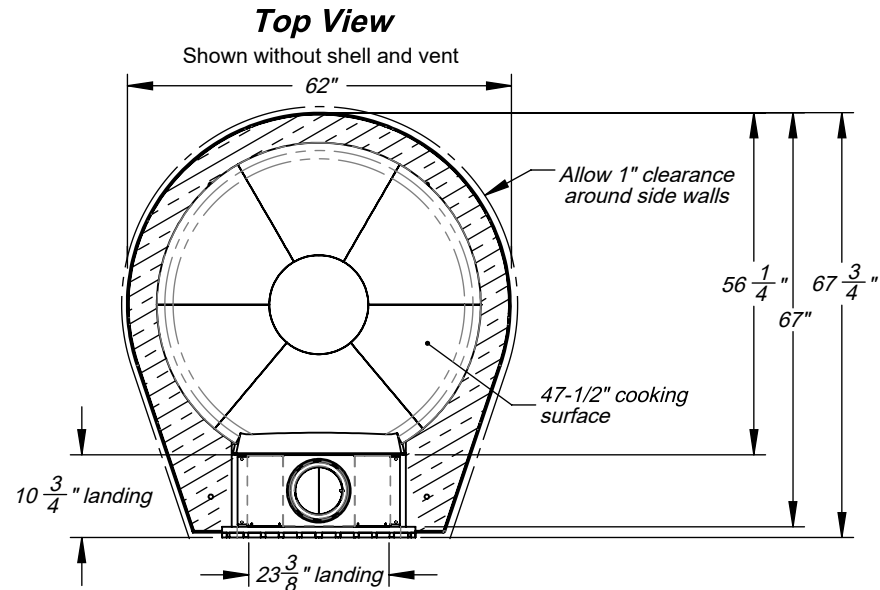
Check local codes for venting requirements.

Product UL listed for UL103HT Direct Vent,
Grease Duct or Type 1 Hood

Oven requires fork lift to offload at time of delivery.

WARNING:

**READ ALL INSTRUCTIONS IN INSTALLATION MANUAL
BEFORE INSTALLING AND USING APPLIANCE. FAILURE
TO FOLLOW INSTRUCTIONS MAY RESULT IN PROPERTY
DAMAGE, BODILY INJURY OR EVEN DEATH**



Front View Option A - Flush Trailer Vent

SECTION A-A

Shown with non-combustible hearth



Intertek



Intertek

UL737, UL2162, NSF-4, CAN/CGA-1.8 Dual,

ANSI-Z83.11 Dual, ANSI-Z21.58, CSA 1.6-2007 Listed

For more information: www.fornobravo.com

Made in the U.S.A.

FORNO BRAVO®
THE WORLD'S FINEST PIZZA OVENS

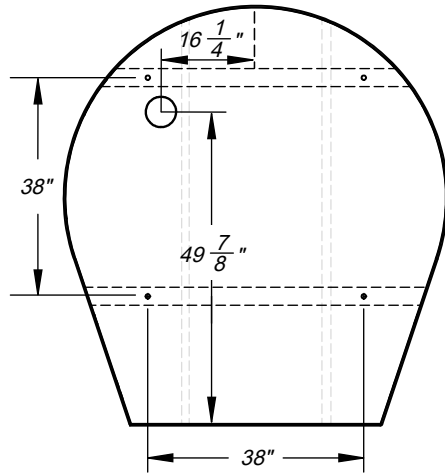
Viaggio 120

Architect Drawings

Revision 5/29/2020

Sheet: 1 of 4

Top View Oven Mounting Layout



Clearance to Combustibles:

Allow 1" clearance all the way around side walls

14" required above completed dome

30" side clearance from door opening

36" from front of oven landing to combustibles

Non-combustible hearth

Specifications:

Wood fuel

Crate ships 74" W x 82" D x 50" H

Approx oven weight 2804 lbs.

Approx shipping weight 3389 lbs

Check local codes for venting requirements.

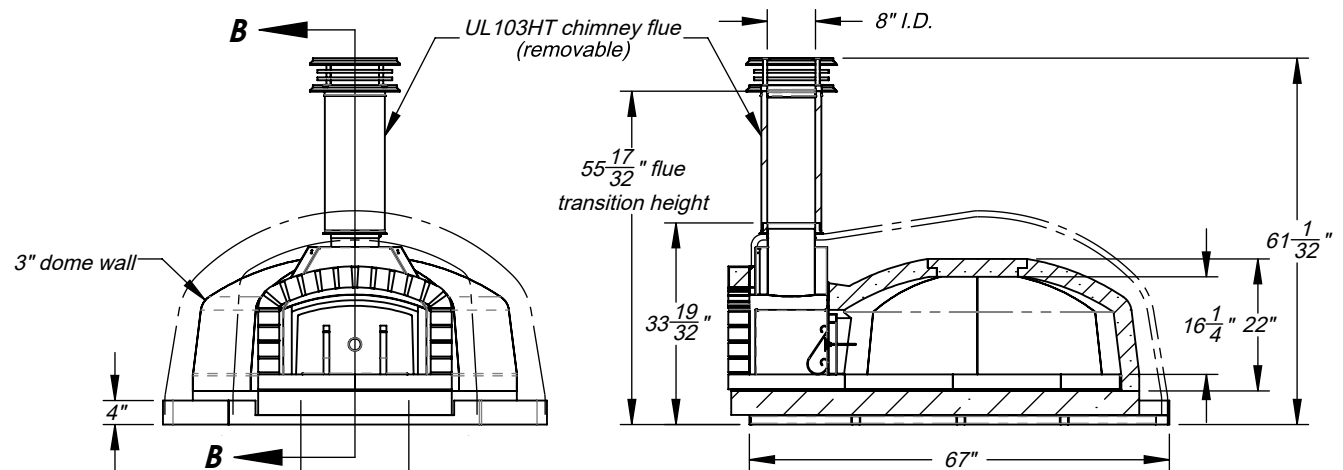
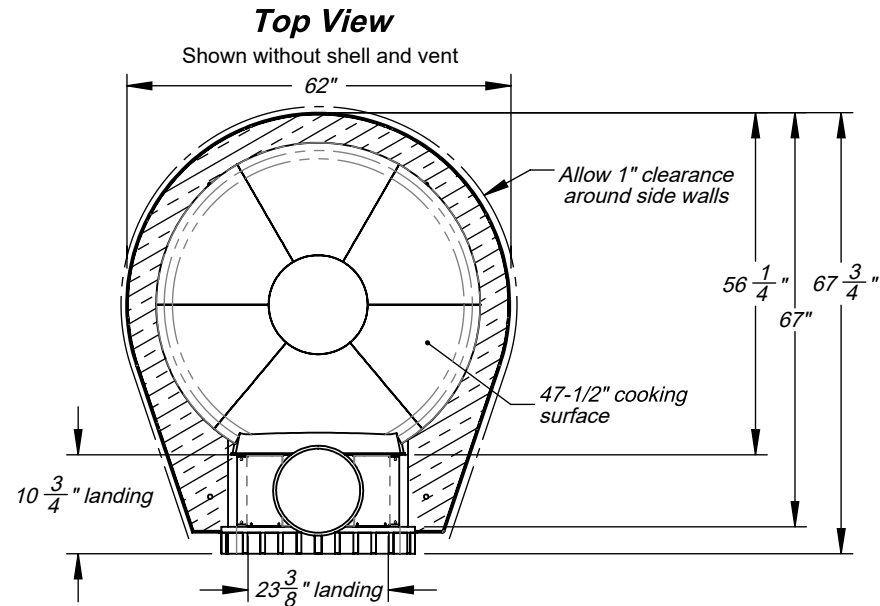
Product UL listed for UL103HT Direct Vent,

Grease Duct or Type 1 Hood

Oven requires fork lift to offload at time of delivery.

WARNING:

**READ ALL INSTRUCTIONS IN INSTALLATION MANUAL
BEFORE INSTALLING AND USING APPLIANCE. FAILURE
TO FOLLOW INSTRUCTIONS MAY RESULT IN PROPERTY
DAMAGE, BODILY INJURY OR EVEN DEATH**



Front View Option B - Extended Trailer Vent



Intertek



Intertek

UL737, UL2162, NSF-4, CAN/CGA-1.8 Dual,

ANSI-Z83.11 Dual, ANSI-Z21.58, CSA 1.6-2007 Listed

For more information: www.fornobravo.com

SECTION B-B

Shown with non-combustible hearth

Made in the U.S.A.

FORNO BRAVO®
THE WORLD'S FINEST PIZZA OVENS

Viaggio 120

Architect Drawings

Revision 5/29/2020

Sheet: 2 of 4

Viaggio120 Mobile Drop-In Pizza Oven includes:

- 3" thick, two-sided vibrated refractory oven dome with integral landing
- 13-13/16" or 16-1/2" non-combustible landing
- Industrial-grade ceramic fiber insulation blankets (4" on sides, 6" on top in multiple 1" thick layers)
- 4" of ceramic fiber insulation board below cooking floor (2 x 2")
- NSF-4 rated, 2-1/2" thick fireclay cooking surface (48" x 59")
- 24" removable, double wall stove pipe, anchor plate, and chimney cap with spark arrester
- Powder coated, double wall, insulated steel door
- Door thermometer

Specifications for Oven Finish and Tray:

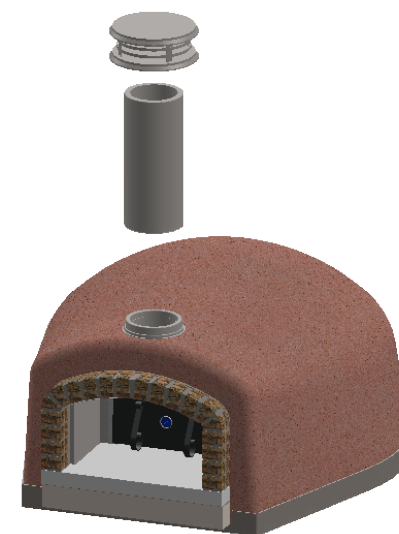
- Stucco finish (2 standard colors; custom color upgrades available)
- Flush or extended trailer vent options
- Fabricated steel ring and tray in a powder coated finish
- Integrated grid of square tubular supports in the tray to increase strength and reduce flex
- Pre-drilled holes and mounting brackets for easy and secure mounting
- Stainless steel strapping of the oven dome to the tray for additional durability
- Stainless steel throat for weight savings
- UL103HT-rated chimney anchor plate and removable stove pipe
- Designed for mounting on a double-axle trailer or food truck
- Oven can be transferred to a future stationary location
- Wood-fired only in mobile applications

WARNING:

READ ALL INSTRUCTIONS IN INSTALLATION MANUAL BEFORE INSTALLING AND USING APPLIANCE.
FAILURE TO FOLLOW INSTRUCTIONS MAY RESULT IN PROPERTY DAMAGE, BODILY INJURY OR EVEN DEATH

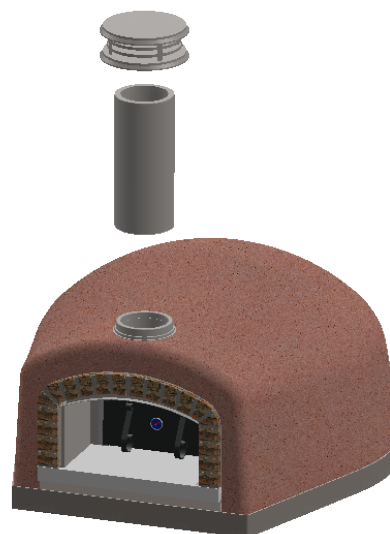


UL737, UL2162, NSF-4, CAN/CGA-1.8 Dual,
ANSI-Z83.11 Dual, ANSI-Z21.58, CSA 1.6-2007 Listed
For more information: www.fornobravo.com



Option B Extended Trailer Vent

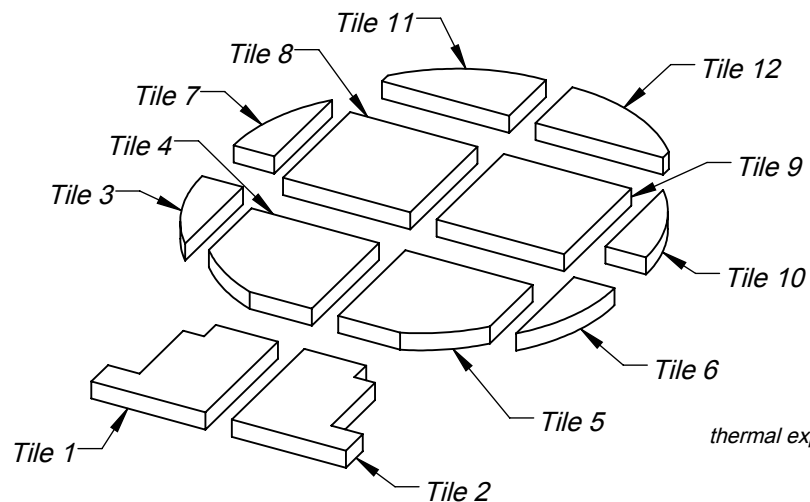
Extended landing for use when going through a wall and being flashed



Option A Flush Trailer Vent

Flush mount landing for use in open trailers and food truck concession trailers

Made in the U.S.A.	
FORNO BRAVO® THE WORLD'S FINEST PIZZA OVENS	
Viaggio 120	
Architect Drawings	
Revision 5/29/2020	Sheet: 3 of 4



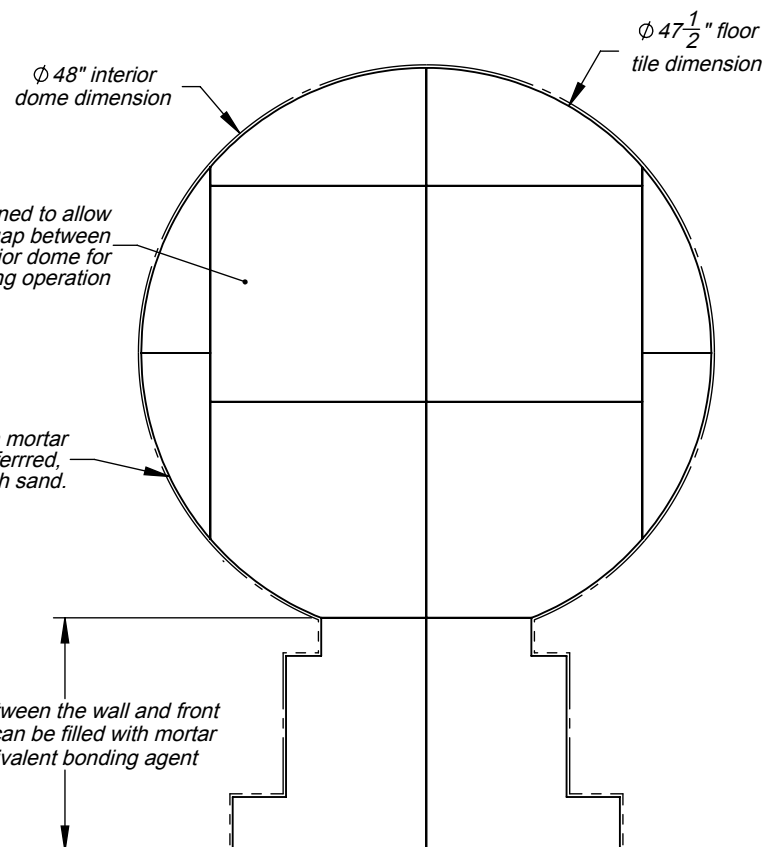
When ordering replacement tiles, reference tile number, pizza oven model and date of purchase

Pizza oven floor designed to allow approximately 1/2" gap between cooking surface and interior dome for thermal expansion and contraction during operation

Do not fill inside wall with mortar or similar bonding agent. If preferred, the space can be filled with sand.

Gaps between the wall and front landing can be filled with mortar or equivalent bonding agent

Top View Floor Tile Layout



Specifications:

Pizza oven floor is NSF-4 rated with 2-1/2" thick surface.

Use 1/4" mortar, sairset, or #60 mesh sand to level the floor.

No more than 3/8" filler around landing or door may not fit.

WARNING:
READ ALL INSTRUCTIONS IN INSTALLATION MANUAL
BEFORE INSTALLING AND USING APPLIANCE. FAILURE TO
FOLLOW INSTRUCTIONS MAY RESULT IN PROPERTY
DAMAGE, BODILY INJURY OR EVEN DEATH.



UL737, UL2162, NSF-4, CAN/CGA-1.8 Dual,
ANSI-Z83.11 Dual, ANSI-Z21.58, CSA 1.6-2007 Listed
For more information: www.fornobravo.com

Made in the U.S.A.	
FORNO BRAVO® THE WORLD'S FINEST PIZZA OVENS	
Viaggio 120	
Architect Drawings	
Revision 5/29/2020	Sheet: 4 of 4