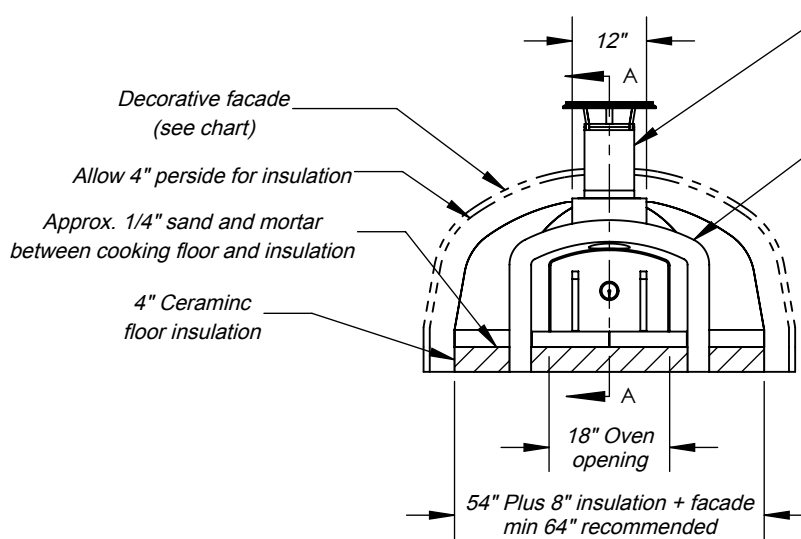
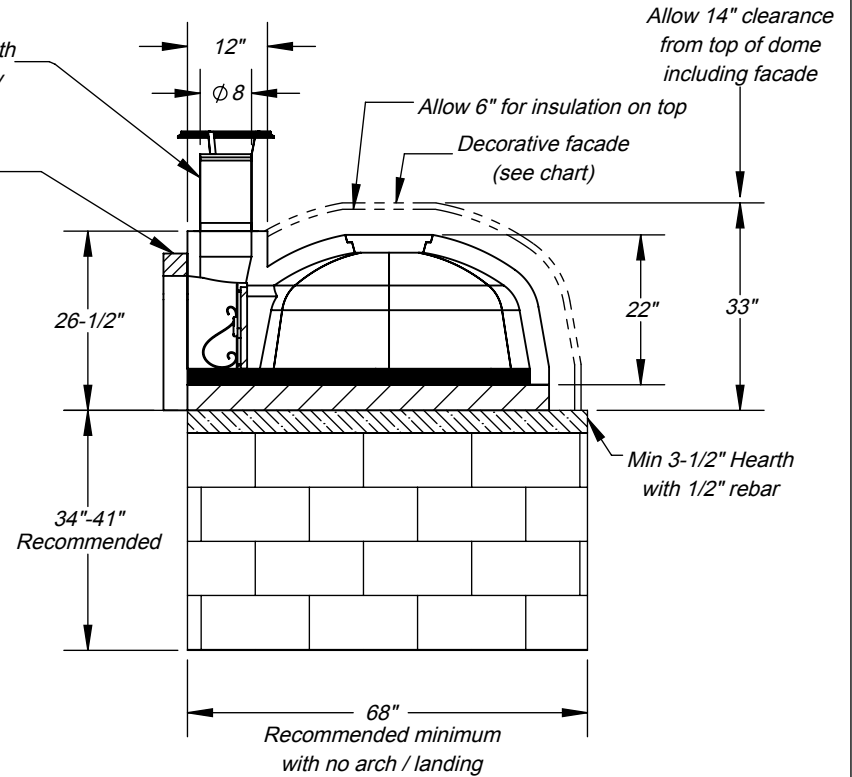


Front View



Side Elevation



Top View

Clearance to combustibles:

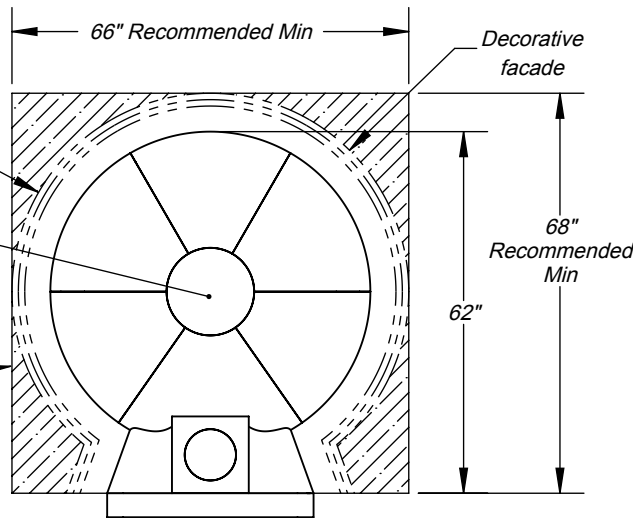
Allow 1" clearance all the way around side walls;

14" above completed dome assembly;

30" Side clearance from door opening;

Non combustible concrete hearth;

Allow 36" from front of oven landing to combustibles;



Specifications:

Wood fuel can be upgraded to gas unit. Refer to gas model for specifications;

Check local codes for venting requirements. Product UL listed for UL103HT direct vent, Grease Duct or Type 1 Hood;

Crate ships 48"W x 54"D x 66"H;

Approx weight 2300 lbs.;

Lift gate service provided.



Decorative Facade Allowances	Depth	Width
Brick Arch	Usually 5"	N/A
Brick Landing	Usually 8"	Preference
Stucco	Approx. 1"	Approx. 2"
Tile	Approx. 1"	Approx. 2"
Stone/Brick Veneer	Check Material Spec.	
Brick or Masonary non veneer	Check Material Spec.	
UL-2162, UL-737, CAN/CGA-1.8, ANSI-Z83.11 Listed		
For more information: www.fornobravo.com		

Made in the U.S.A. Commercial Wood Fired Pizza Oven

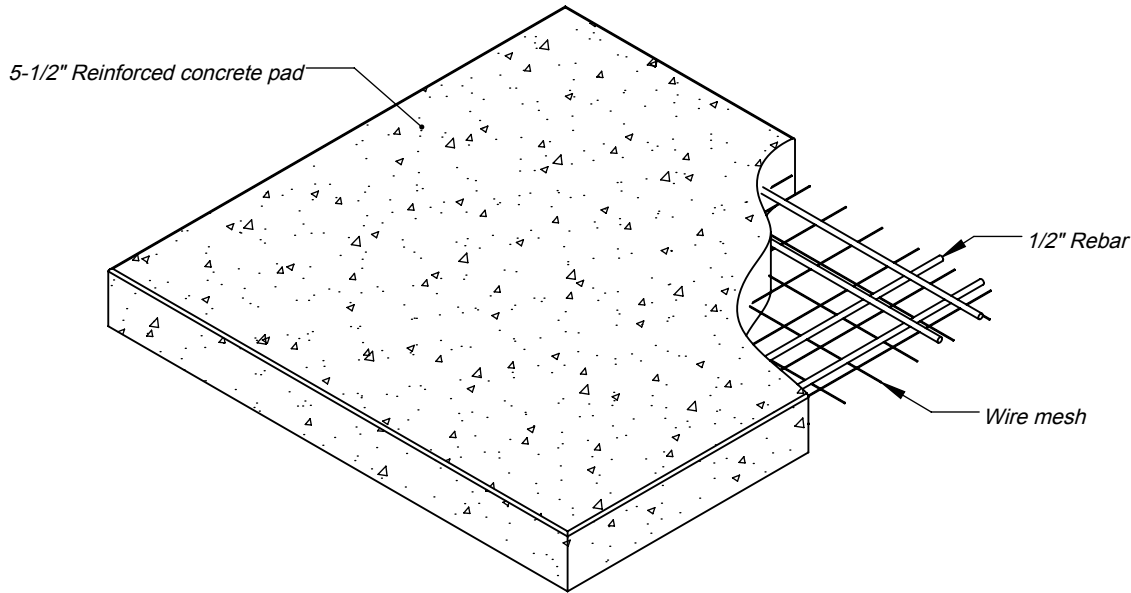


Professionale 120W
Wood Fired Oven

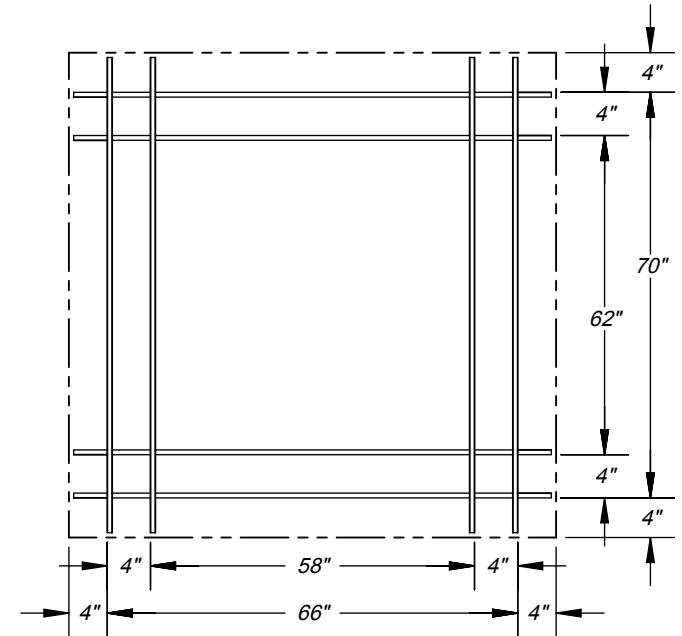
Architect Drawings SKU: FPRO120-WOK

Revision 02/24/2016 Sheet: 1 of 3

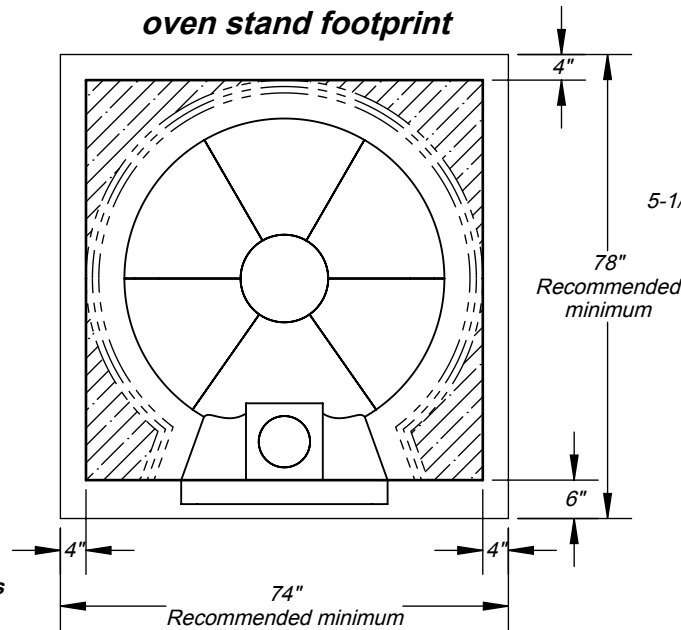
ISO View



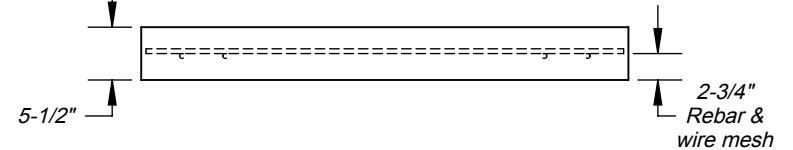
Top View



**Professionale 120W
oven stand footprint**



Side Elevation



Specifications:

Minimum 5-1/2" deep concrete pad;

Reinforced with 1/2" rebar and wire mesh. * wire mesh is not shown in some views for print clarity;

Cut rebar and wire mesh short to conceal inside concrete pad;

Slab dimensions:

Minimum 8" wider than oven stand and hearth;

Minimum 10" deeper than ovenstand and hearth;

Finished slab should be 2" to 3" above ground level;

Refer to local building codes for recommendations regarding soil compaction, frost line and other considerations. Depending on local conditions, you may have to excavate down 18" or more of topsoil to reach stable substrate.

For more information: www.fornobravo.com

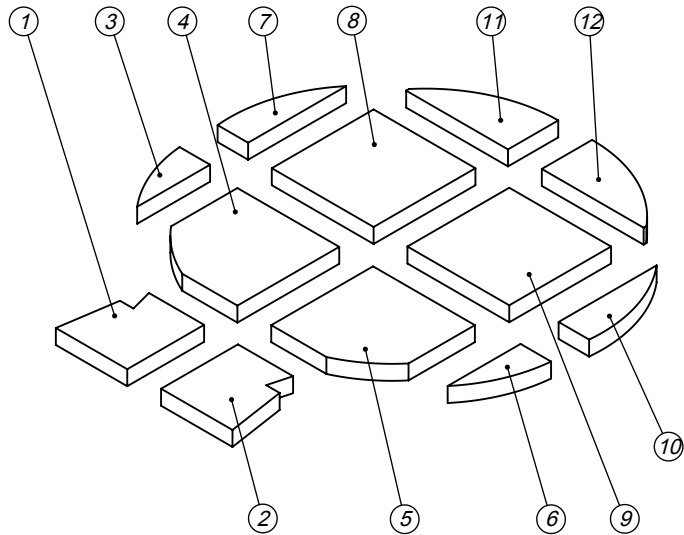
Made in the U.S.A. Commercial Wood Fired Pizza Oven

FORNO BRAVO®
THE WORLD'S FINEST PIZZA OVENS

Professionale 120W
Pizza Oven Pad
Architect Drawings

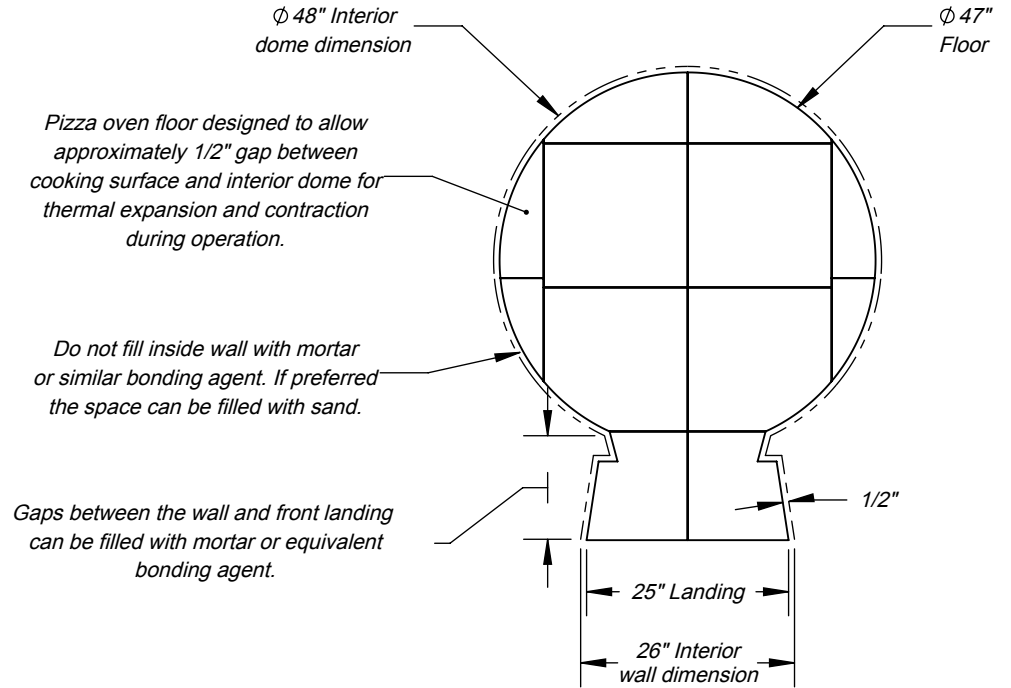
Revision 02/24/2016 Sheet: 2 of 3

ISO View

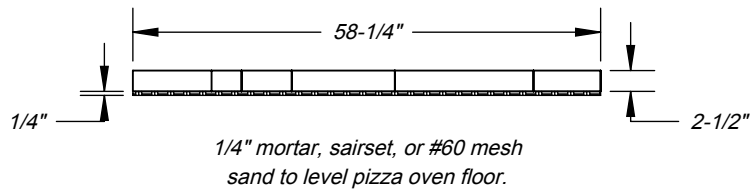


When ordering replacent tiles
reference tile number and pizza oven model.

Top View



Side Elevation



Specifications:

Pizza oven floor is NSF-4 rated with 2-1/2" thick surface.

Use 1/4" mortar, sairset, or #60 mesh sand to level the pizza oven floor.

No more than 3/8" filler around landing or door may not fit.

For more information: www.fornobravo.com

Made in the U.S.A. Commercial Wood Fired Pizza Oven

FORNO BRAVO
THE WORLD'S FINEST PIZZA OVENS

Professionale 120W
Pizza Oven Floor Tile Layout
SKU: FPRO120-WOK



Revision 02/24/2016 Sheet: 3 of 3