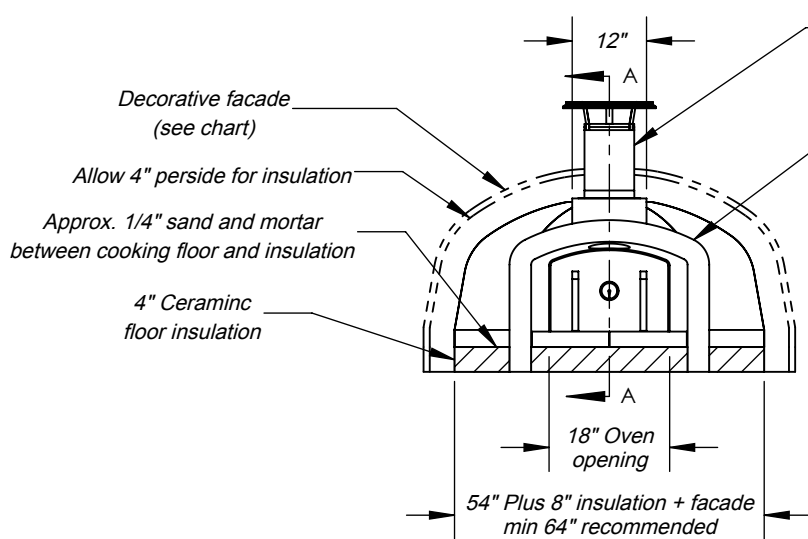
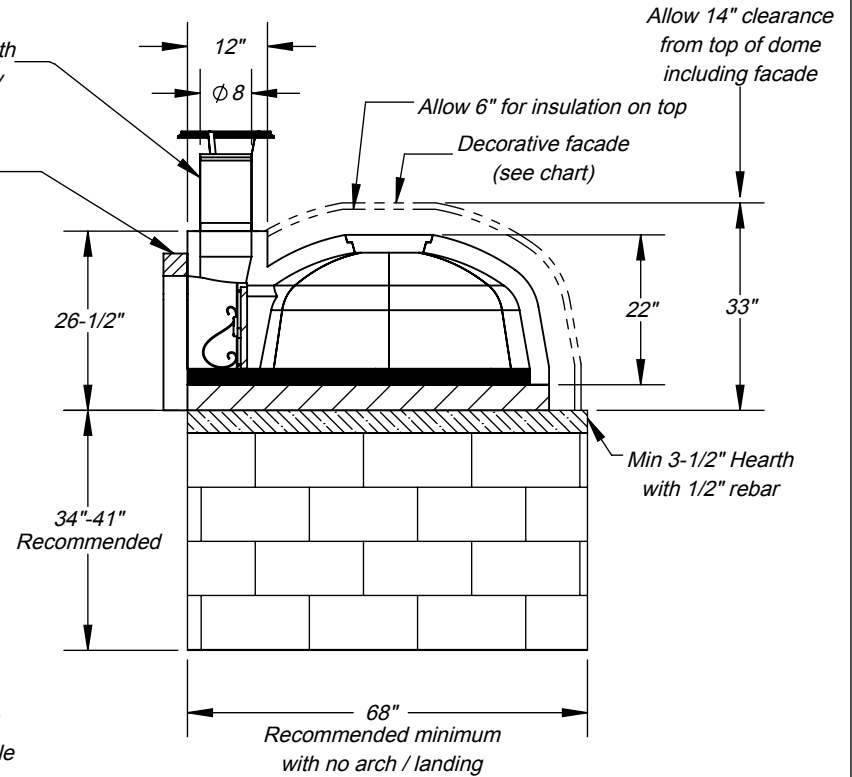


Front View



Side Elevation



Top View

Gas Requirements:

Refer to Gas Burner Drawing for air, & access requirements

Gas burner cutout

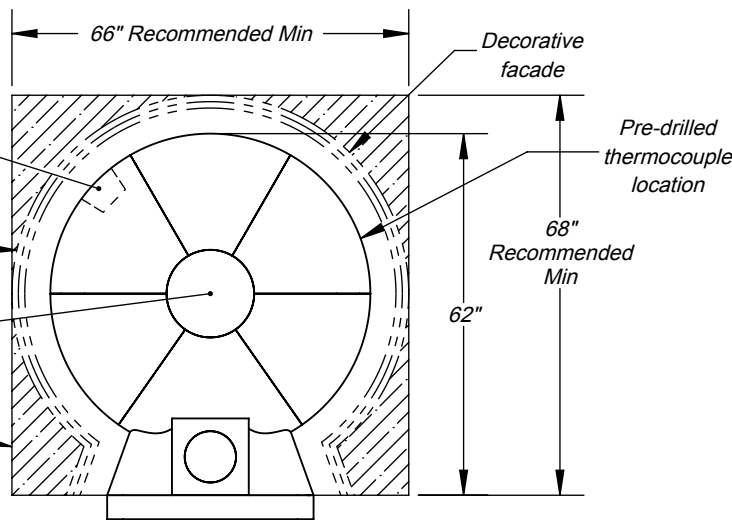
Clearance to combustibles:

Allow 1" clearance all the way around side walls

14" above completed dome assembly

Non combustible concrete hearth

Allow 36" from front of oven landing to combustibles



Specifications:

Wood, liquid gas or propane fuel;

Check local codes for venting requirements.

Product UL listed for UL 103HT direct vent, Grease Duct or Type 1 Hood;

Crate ships 48"W x 52"D x 66"H;

Approx weight 2300 lbs.

Lift gate service provided.



Decorative Facade Allowances	Depth	Width
Brick Arch	Usually 5"	N/A
Brick Landing	Usually 8"	Preference
Stucco	Approx. 1"	Approx. 2"
Tile	Approx. 1"	Approx. 2"
Stone/Brick Veneer	Check Material Spec.	
Brick or Masonary non veneer	Check Material Spec.	
UL-2162, UL-737, CAN/CGA-1.8, ANSI-Z83.11 Listed		
For more information: www.fornobravo.com		

Made in the U.S.A. Commercial Gas Fired Pizza Oven

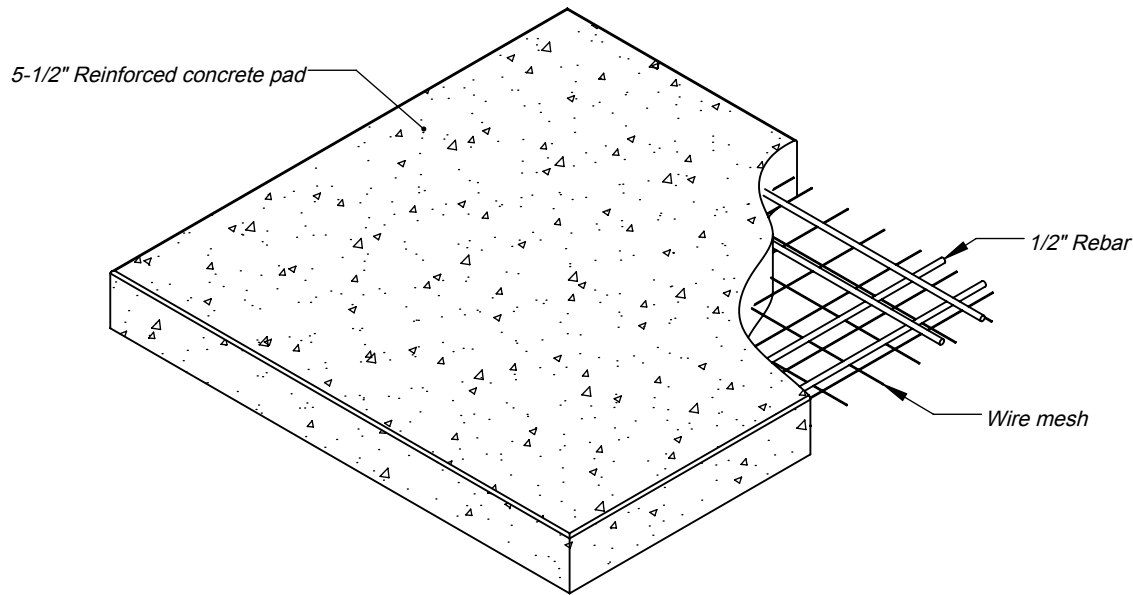


Professionale 120G
Gas Fired Oven

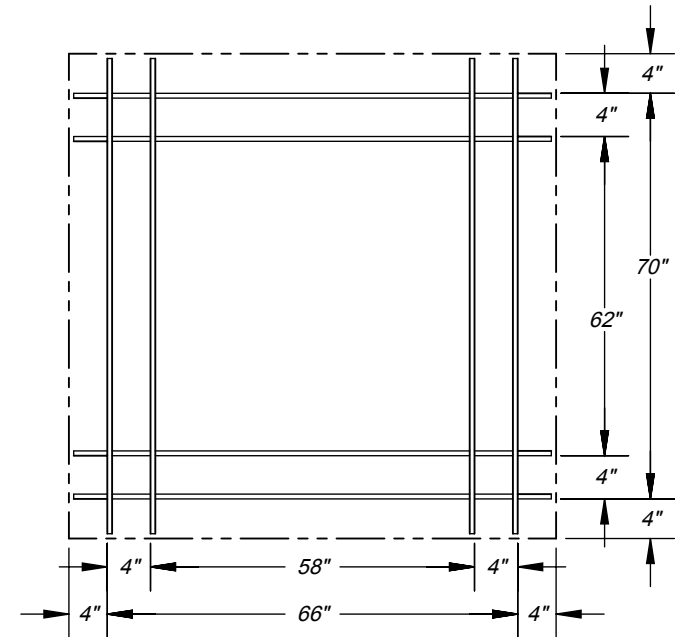
Architect Drawings SKU: FPRO120-GOK

Revision 02/24/2016 Sheet: 1 of 3

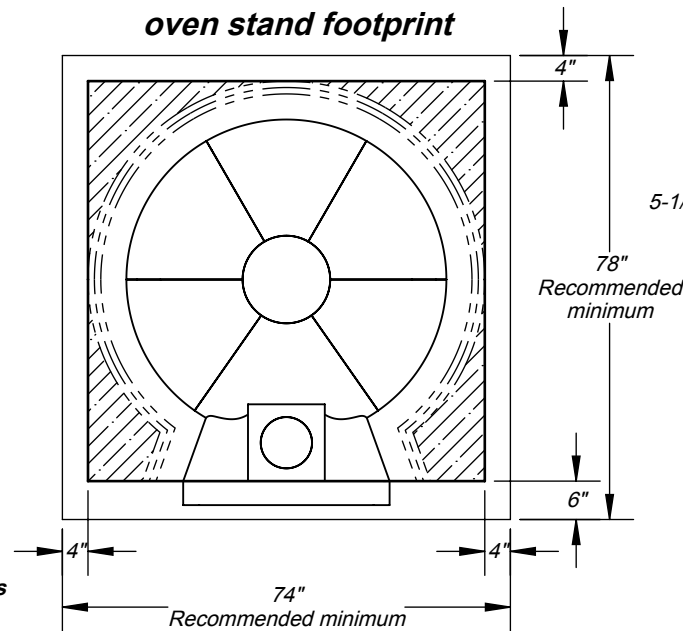
ISO View



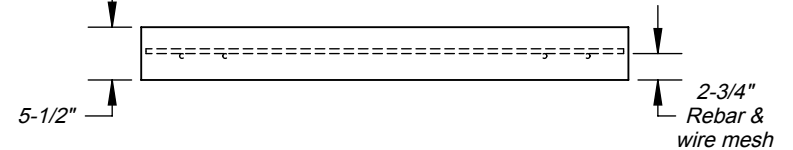
Top View



**Professionale 120G
oven stand footprint**



Side Elevation



Specifications:

Minimum 5-1/2" deep concrete pad;

Reinforced with 1/2" rebar and wire mesh. * wire mesh is not shown in some views for print clarity;

Cut rebar and wire mesh short to conceal inside concrete pad;

Slab dimensions:

Minimum 8" wider than oven stand and hearth;

Minimum 10" deeper than ovenstand and hearth;

Finished slab should be 2" to 3" above ground level;

Refer to local building codes for recommendations regarding soil compaction, frost line and other considerations. Depending on local conditions, you may have to excavate down 18" or more of topsoil to reach stable substrate.

For more information: www.fornobravo.com

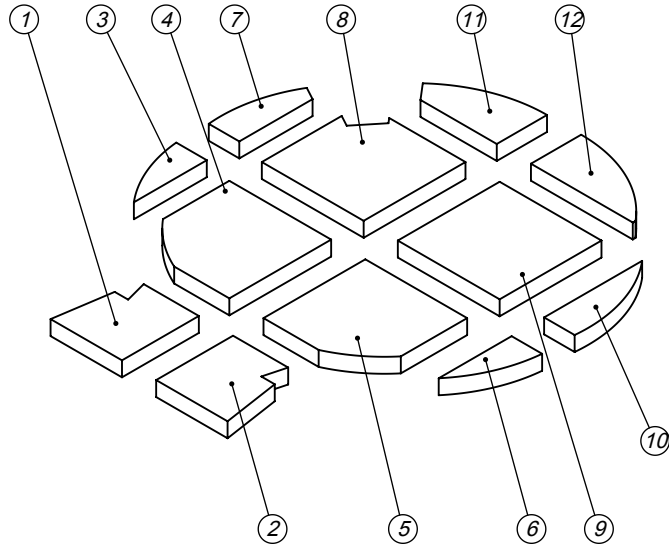
Made in the U.S.A. Commercial Gas Fired Pizza Oven

FORNO BRAVO®
THE WORLD'S FINEST PIZZA OVENS

Professionale 120G
Pizza Oven Pad
Architect Drawings

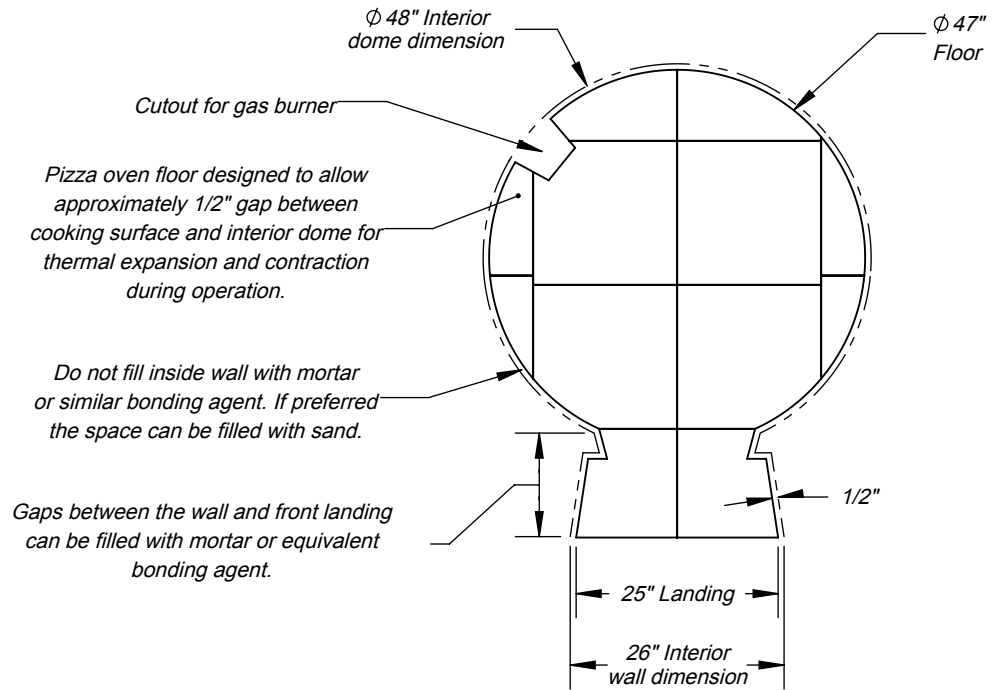
Revision 02/24/2016 Sheet: 2 of 3

ISO View

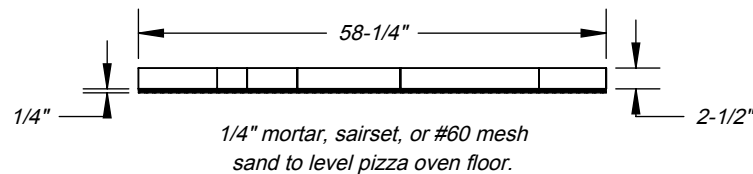


When ordering replacement tiles reference tile number and pizza oven model.

Top View



Side Elevation



Specifications:

Pizza oven floor is NSF-4 rated with 2-1/2" thick surface.

Use 1/4" mortar, sairset, or #60 mesh sand to level the pizza oven floor.

No more than 3/8" filler around landing or door may not fit.

For more information: www.fornobravo.com

Made in the U.S.A. Commercial Gas Fired Pizza Oven

FORNO BRAVO®
THE WORLD'S FINEST PIZZA OVENS

Professionale 120G
Pizza Oven Floor Tile Layout
SKU: FPRO120-GOK



Revision 02/24/2016 Sheet: 3 of 3