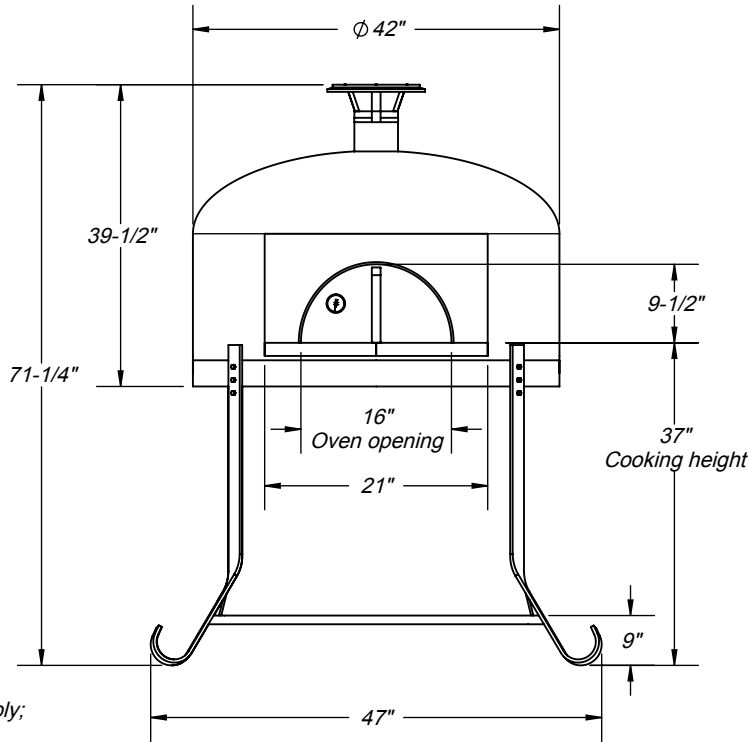


Front View



Clearance to combustibles:

- 1" clearance all the way around side walls;
- 14" above completed dome assembly;
- 30" side clearance from door opening;
- 36" from front of oven landing;

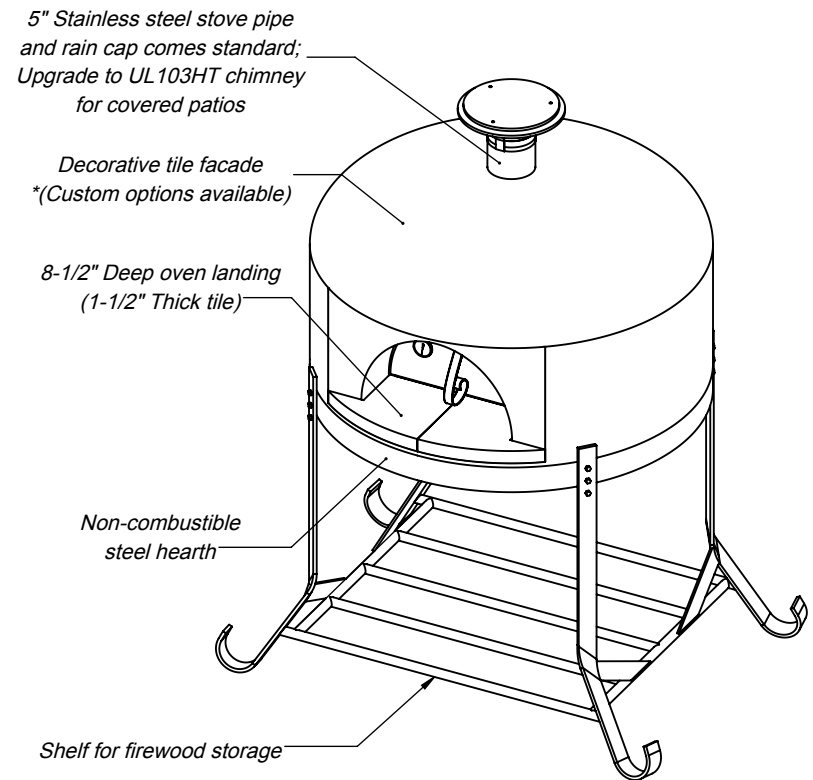
Non-combustible hearth.

Specifications:

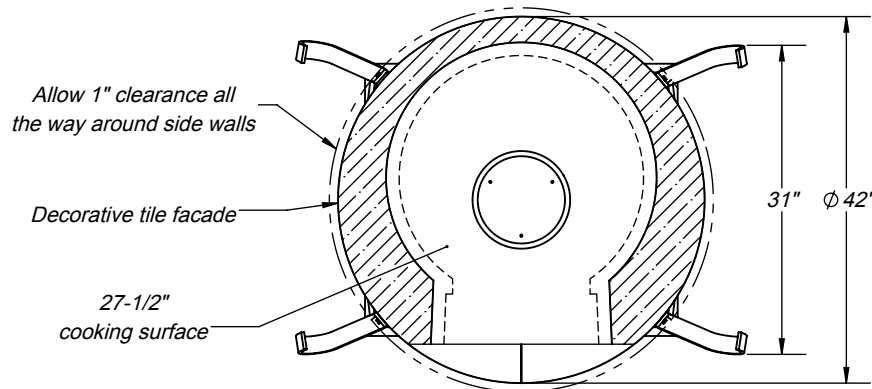
- Wood fuel;
- Available with or without stand;
- Stainless steel stove pipe with 5" interior and rain cap comes standard;
- Crate ships 49"W x 50"D x 58"H;
- Oven and stand weight: 1105 lbs..

WARNING:
READ ALL INSTRUCTIONS IN INSTALLATION MANUAL BEFORE INSTALLING AND USING APPLIANCE. FAILURE TO FOLLOW INSTRUCTIONS MAY RESULT IN PROPERTY DAMAGE, BODILY INJURY OR EVEN DEATH.

ISO View



Top View



For more information: www.fornobravo.com

Installation guide: www.fornobravo.com/PDF/Primavera-operation.pdf

Made in the U.S.A. Residential Wood Fired Pizza Oven

FORNO BRAVO®
 THE WORLD'S FINEST PIZZA OVENS

Napolino 70

Wood Fired Pizza Oven w/ Stand

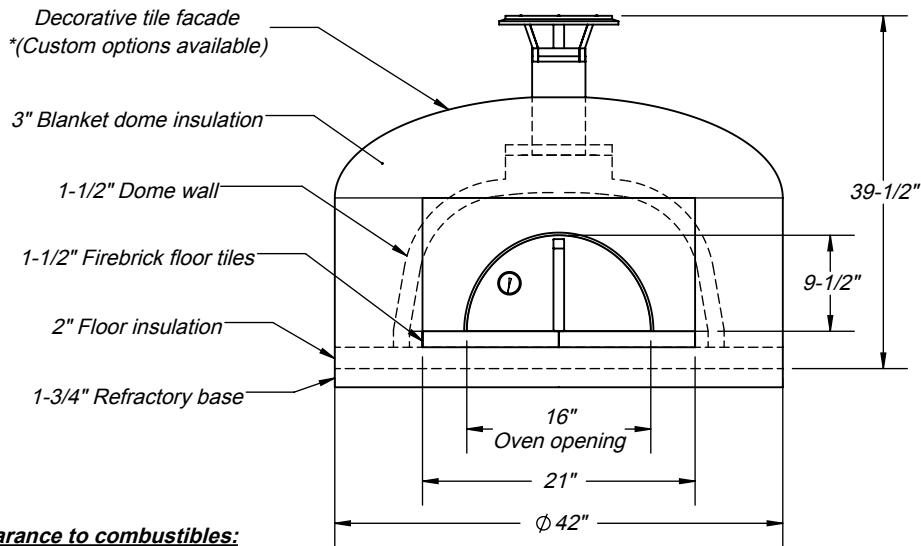
Architect Drawings

SKU: FNO70

Revision 09/08/16

Sheet: 1 of 4

Front View



Clearance to combustibles:

- 1" clearance all the way around side walls;
- 14" above completed dome assembly;
- 30" side clearance from door opening;
- 36" from front of oven landing;
- Non-combustible hearth.

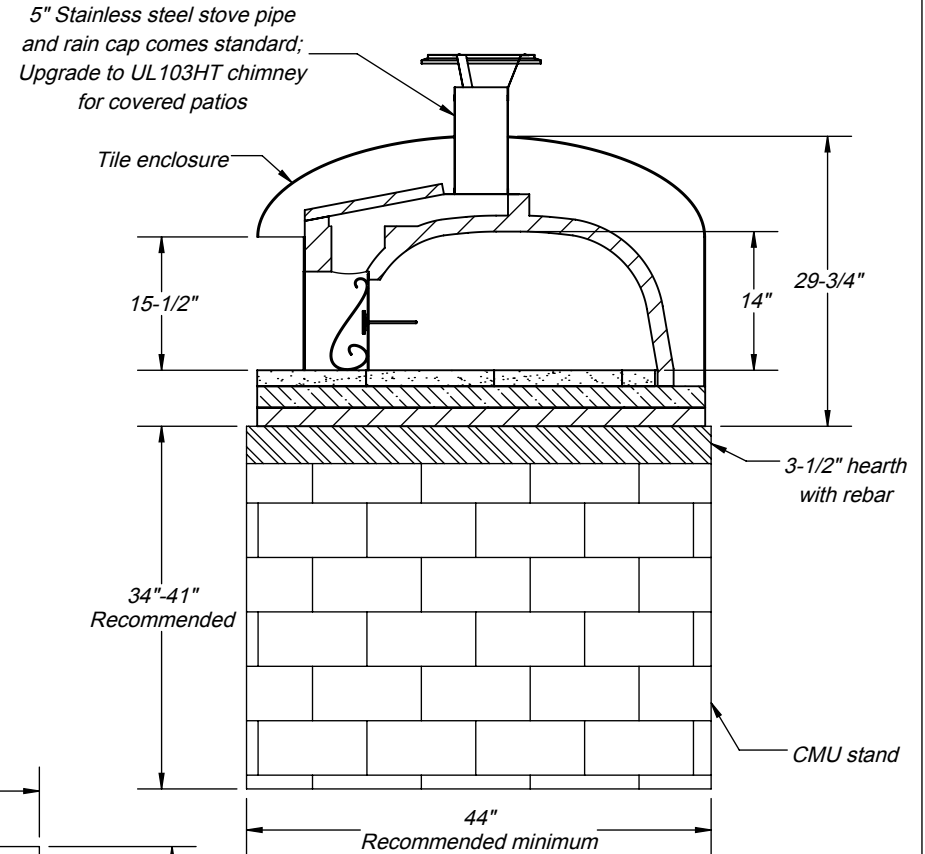
Specifications:

- Wood fuel;
- Shown without stand;
- Stainless steel stove pipe with 5" interior and rain cap comes standard.
- Crate ships 49"W x 50"D x 49"H;
- Oven and stand weight: 1320 lbs..

WARNING:

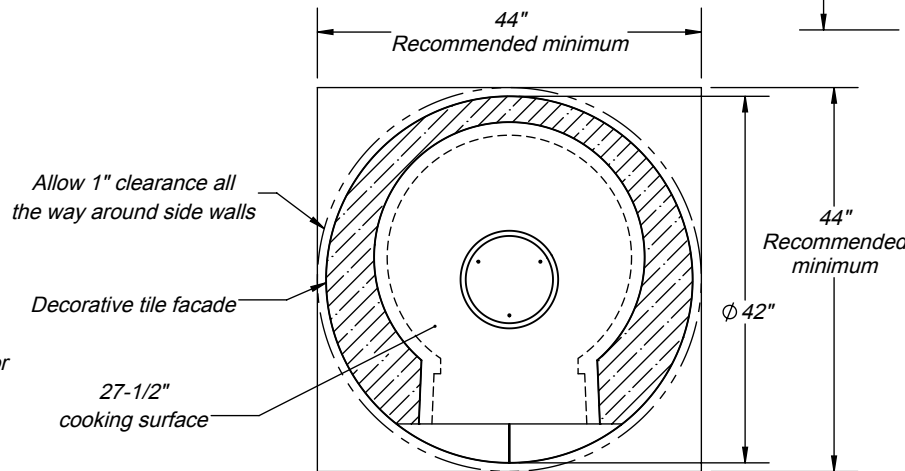
READ ALL INSTRUCTIONS IN INSTALLATION MANUAL BEFORE INSTALLING AND USING APPLIANCE. FAILURE TO FOLLOW INSTRUCTIONS MAY RESULT IN PROPERTY DAMAGE, BODILY INJURY OR EVEN DEATH.

Side Elevation



*Shown with customer installed non-combustible concrete hearth (CMU)

Top View



For more information: www.fornobravo.com

Installation guide: www.fornobravo.com/PDF/Primavera-operation.pdf

Made in the U.S.A. Residential Wood Fired Pizza Oven

FORNO BRAVO®
THE WORLD'S FINEST PIZZA OVENS

Napolino 70 NS

Wood Fired Pizza Oven w/o Stand

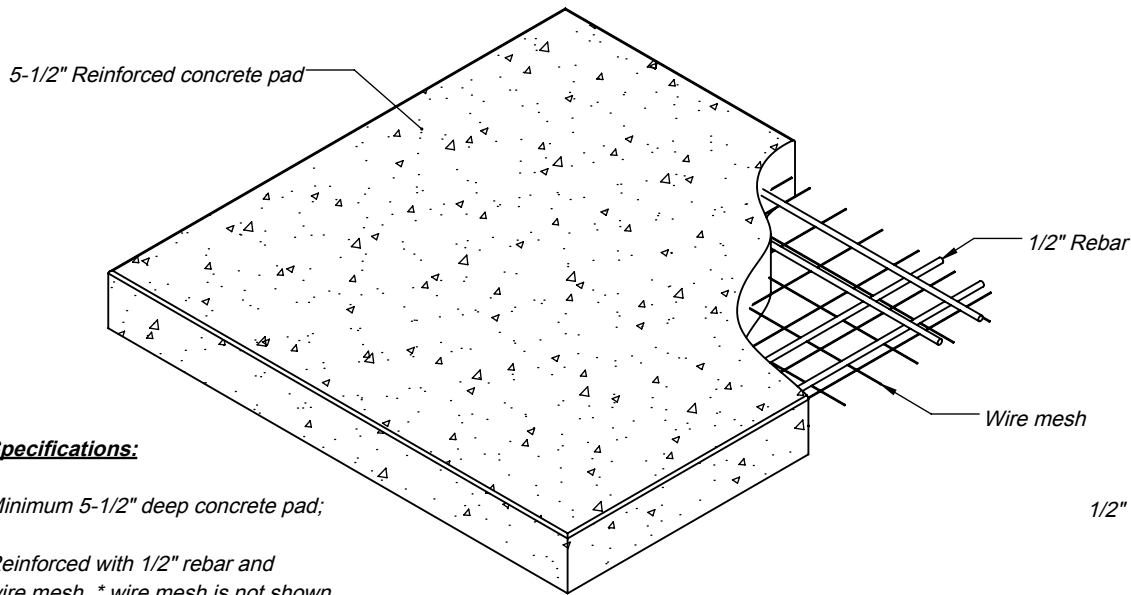
Architect Drawings

SKU: GNO70-NS

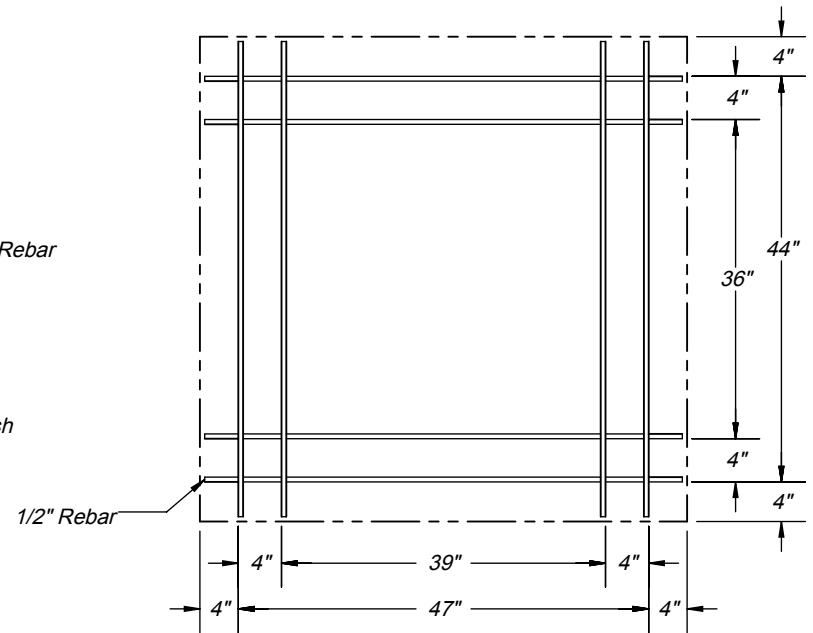
Revision 09/08/16

Sheet: 2 of 4

ISO View



Top View



Specifications:

Minimum 5-1/2" deep concrete pad;

Reinforced with 1/2" rebar and wire mesh. * wire mesh is not shown in some views for print clarity;

Cut rebar and wire mesh short to conceal inside concrete pad;

*CMU stand requires a minimum cement foundation pad of 52"W x 54"L

Slab dimensions:

Minimum 8" wider than oven stand and hearth;

Minimum 10" deeper than oven stand and hearth;

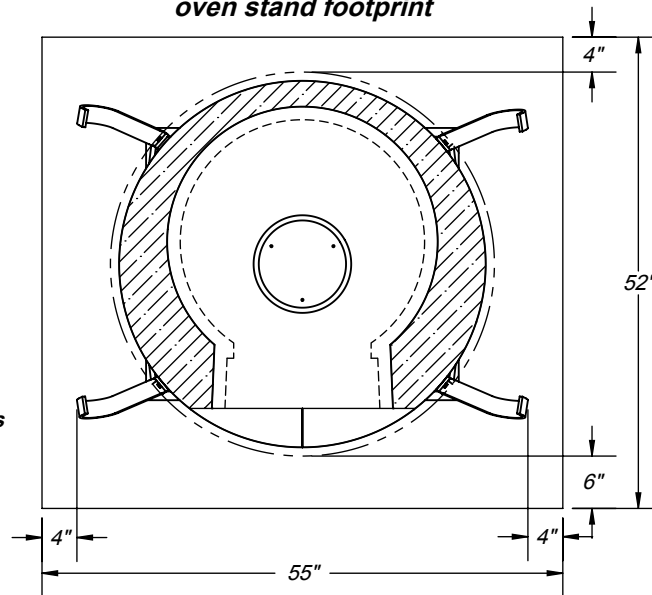
Finished slab should be 2" to 3" above ground level;

Refer to local building codes for recommendations regarding soil compaction, frost line and other considerations. Depending on local conditions, you may have to excavate down 18" or more of topsoil to reach stable substrate.

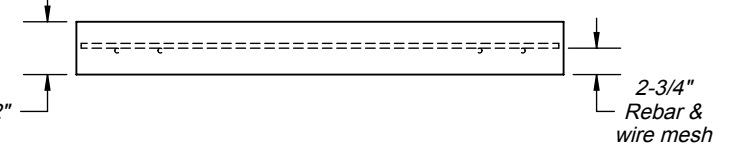
WARNING:

READ ALL INSTRUCTIONS IN INSTALLATION MANUAL BEFORE INSTALLING AND USING APPLIANCE. FAILURE TO FOLLOW INSTRUCTIONS MAY RESULT IN PROPERTY DAMAGE, BODILY INJURY OR EVEN DEATH.

Napolino 70 oven stand footprint



Side Elevation



Made in the U.S.A. Residential Wood Fired Pizza Oven

FORNO BRAVO®
THE WORLD'S FINEST PIZZA OVENS

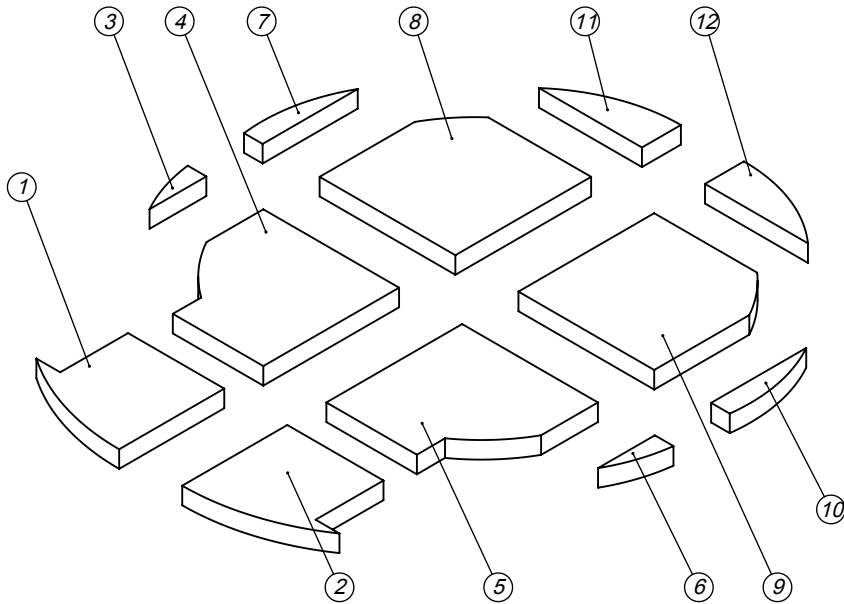
Napolino 70
Wood Fired Pizza Oven Pad
Architect Drawings

Revision 09/08/16

Sheet: 3 of 4

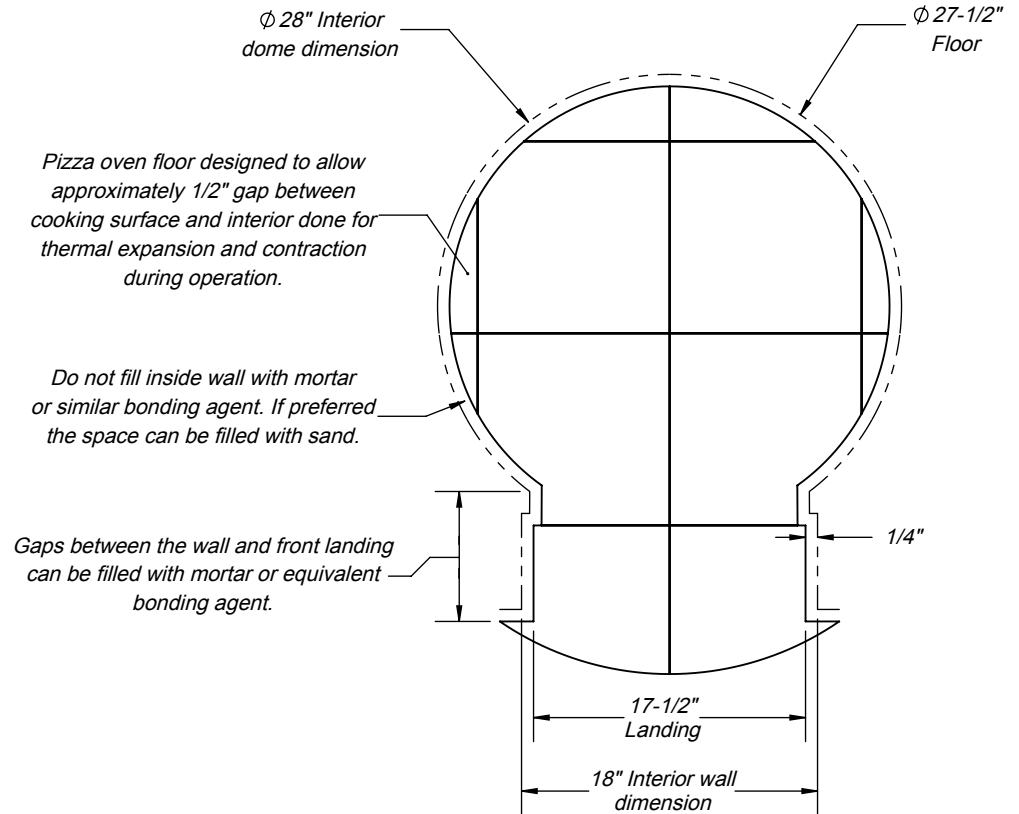
For more information: www.fornobravo.com
Installation guide: www.fornobravo.com/PDF/Primavera-operation.pdf

ISO View

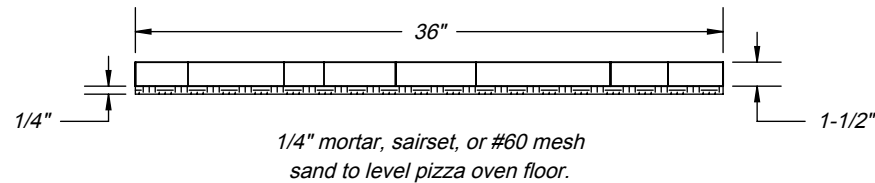


When ordering replacement tiles, reference tile number, pizza oven model and purchase date.

Top View



Side Elevation



Specifications:

Pizza oven floor is NSF-4 rated with 1-1/2" thick surface.

Use 1/4" mortar, sairset, or #60 mesh sand to level the pizza oven floor.

No more than 3/8" filler around landing or door may not fit.

WARNING:
READ ALL INSTRUCTIONS IN INSTALLATION MANUAL BEFORE INSTALLING AND USING APPLIANCE. FAILURE TO FOLLOW INSTRUCTIONS MAY RESULT IN PROPERTY DAMAGE, BODILY INJURY OR EVEN DEATH.

For more information: www.fornobravo.com
Installation guide: www.fornobravo.com/PDF/Primavera-operation.pdf

Made in the U.S.A. Residential Wood Fired Pizza Oven

FORNO BRAVO®
THE WORLD'S FINEST PIZZA OVENS

Napolino 70
Pizza Oven Floor Tile Layout
Architect Drawings

Revision 09/08/16

Sheet: 4 of 4