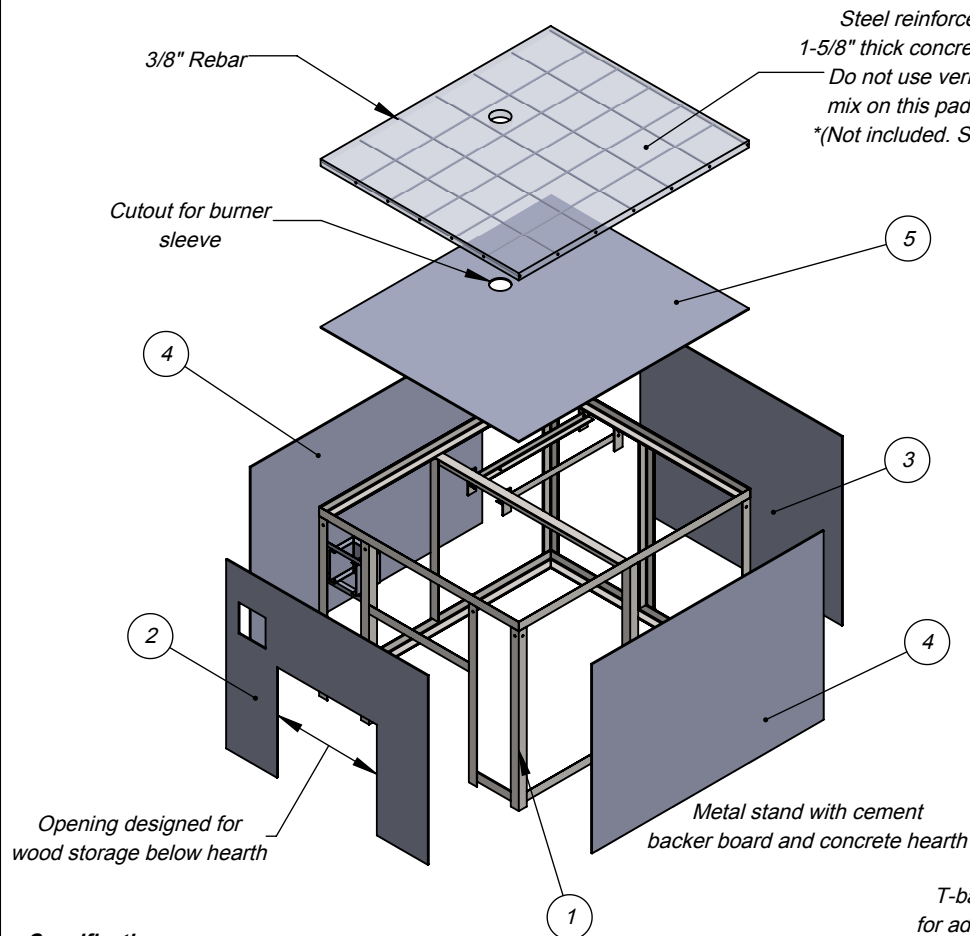
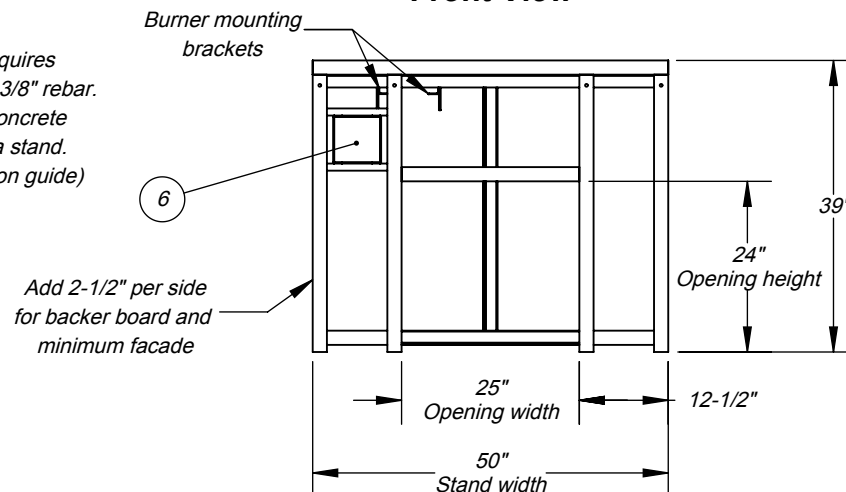


ISO View

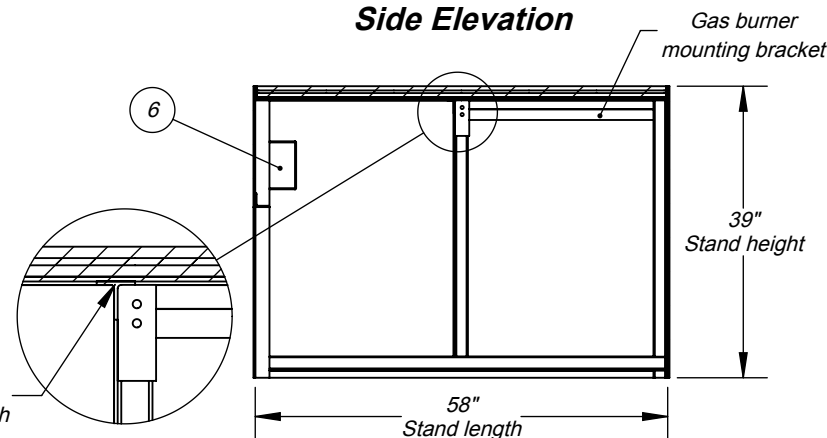


Steel reinforced hearth requires
1-5/8\" thick concrete pad with 3/8\" rebar.
Do not use vermiculite in concrete
mix on this pad with Cucina stand.
*(Not included. See installation guide)

Front View



Side Elevation



DETAIL A
SCALE 1 : 10

Specifications:

Stand includes metal frame, assembly hardware,
precut / predrilled exterior cement backer board panels.

The Cucina 90G stand works with Casa2G 90G oven.

*Hearth materials not included. See installation guide.

WARNING:
READ ALL INSTRUCTIONS IN INSTALLATION MANUAL
BEFORE INSTALLING AND USING APPLIANCE. FAILURE TO
FOLLOW INSTRUCTIONS MAY RESULT IN PROPERTY
DAMAGE, BODILY INJURY OR EVEN DEATH.

For more information: www.fornobravo.com
Installation guide: www.fornobravo.com/PDF/residential_install.pdf



| ITEM# | PART NAME | DESCRIPTION | QTY |
|-------|-----------------------|-----------------------------|-----|
| 1 | Cucina2G 90G | Metal frame substructure | 1 |
| 2 | Front Panel | 1/4\" Pre-cut Backer Board | 1 |
| 3 | Back Panel | 1/4\" Pre-cut Backer Board | 1 |
| 4 | Side Panel | 1/4\" Pre-cut Backer Board | 2 |
| 5 | Top Panel | 1/2\" Pre-cut Backer Board | 1 |
| 6 | Control Box Mount | Secures burner control unit | 1 |
| 7 | Hex Bolt, 3/8\" x 1\" | *Not displayed | 10 |
| 8 | Hex Nut, 3/8\" | *Not displayed | 10 |
| 9 | Self Tapping Screw | *Not displayed | 55 |
| | *Concrete Hearth | * See installation guide | |
| | *Rebar | * See installation guide | |

Made in the U.S.A. Residential Gas Fired Pizza Oven

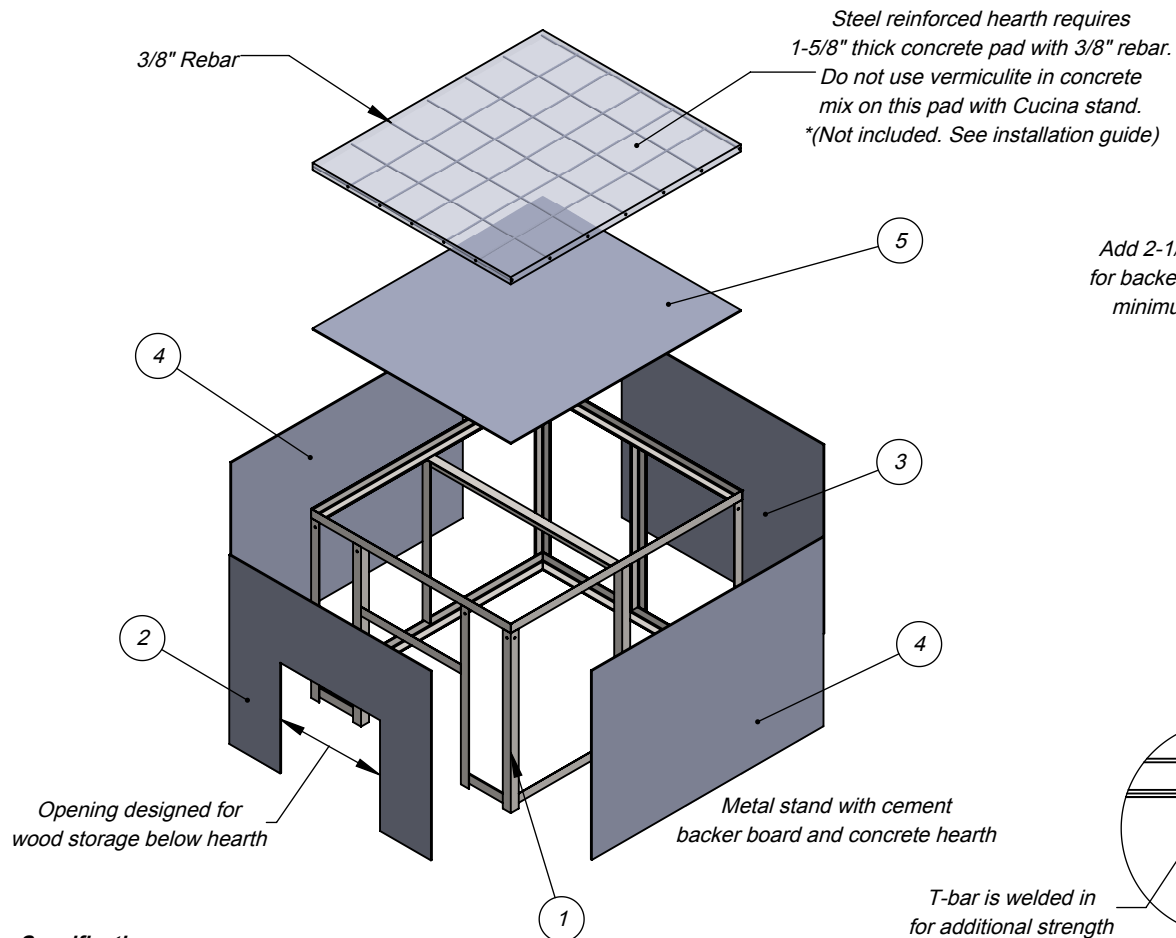
FORNO BRAVO®
THE WORLD'S FINEST PIZZA OVENS

Cucina 90G
Gas Fired Pizza Oven Stand
Architect Drawings SKU: ICS90G

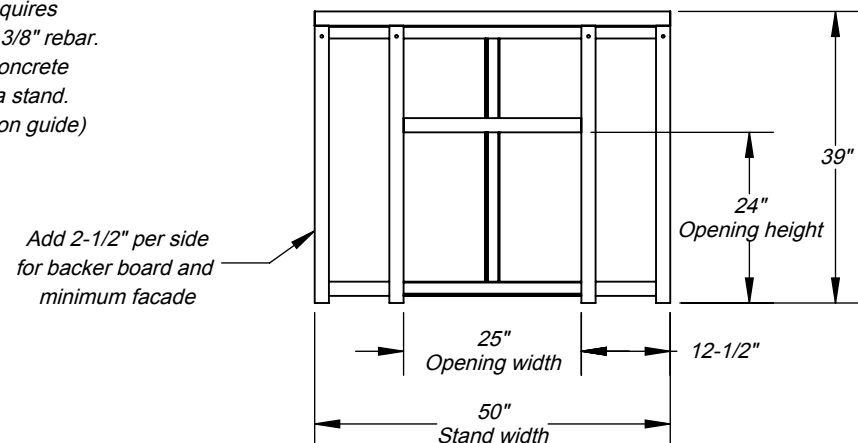
Revision 8/11/2016

Sheet: 1 of 3

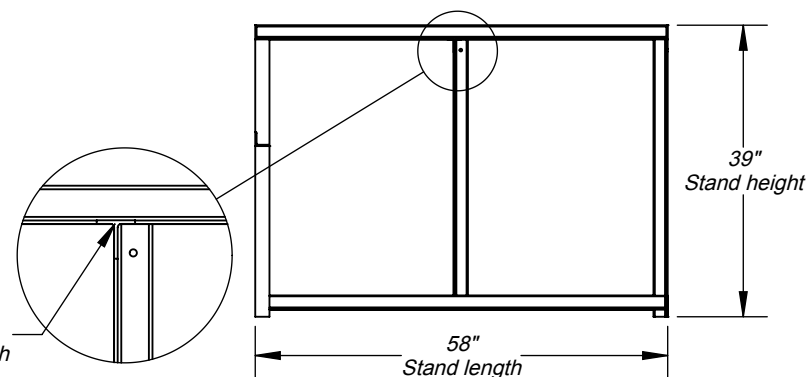
ISO View



Front View



Side Elevation



Specifications:

Stand includes metal frame, assembly hardware, precut / predrilled exterior cement backer board panels.


The Cucina 90W stand works with Casa2G 90W oven.

*Hearth materials not included. See installation guide.

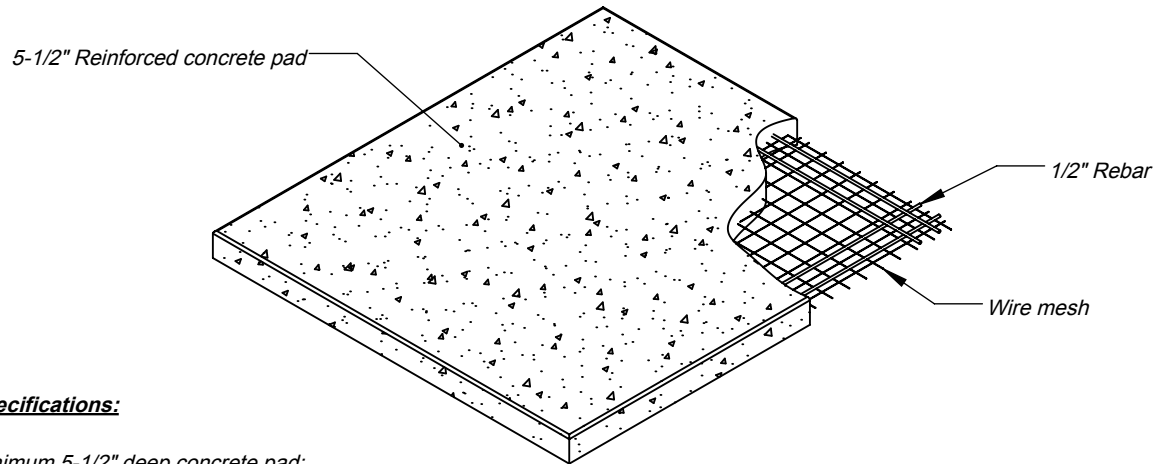
WARNING:
READ ALL INSTRUCTIONS IN INSTALLATION MANUAL BEFORE INSTALLING AND USING APPLIANCE. FAILURE TO FOLLOW INSTRUCTIONS MAY RESULT IN PROPERTY DAMAGE, BODILY INJURY OR EVEN DEATH.

For more information: www.fornobravo.com
Installation guide: www.fornobravo.com/PDF/residential_install.pdf



| ITEM# | PART NAME | DESCRIPTION | QTY | <div>Made in the U.S.A.</div> <div>Residential Wood Fired Pizza Oven</div> <div>FORNO BRAVO® THE WORLD'S FINEST PIZZA OVENS</div> |
|-------|---------------------|---------------------------|-----|---|
| 1 | Cucina2G 90W | Metal frame substructure | 1 | |
| 2 | Front Panel | 1/4" Pre-cut Backer Board | 1 | |
| 3 | Back Panel | 1/4" Pre-cut Backer Board | 1 | |
| 4 | Side Panel | 1/4" Pre-cut Backer Board | 2 | |
| 5 | Top Panel | 1/2" Pre-cut Backer Board | 1 | |
| 6 | Hex Bolt, 3/8" x 1" | *Not displayed | 10 | |
| 7 | Hex Nut, 3/8" | *Not displayed | 10 | |
| 8 | Self Tapping Screw | *Not displayed | 55 | |
| | *Concrete Hearth | * See installation guide | | |
| | *Rebar | * See installation guide | | <div>Cucina 90W</div> <div>Wood Fired Pizza Oven Stand</div> <div>Architect Drawings</div> <div>Revision 8/11/2016</div> |
| | | | | <div>SKU: ICS90W</div> <div>Sheet: 2 of 3</div> |

ISO View



Specifications:

Minimum 5-1/2" deep concrete pad;

Reinforced with 1/2" rebar and wire mesh. * wire mesh is not shown in some views for print clarity;

Cut rebar and wire mesh short to conceal inside concrete pad;

*CMU stand requires a minimum cement foundation pad of 58"W x 61"D

Slab dimensions:

Minimum 8" wider than oven stand and hearth;

Minimum 10" deeper than oven stand and hearth;

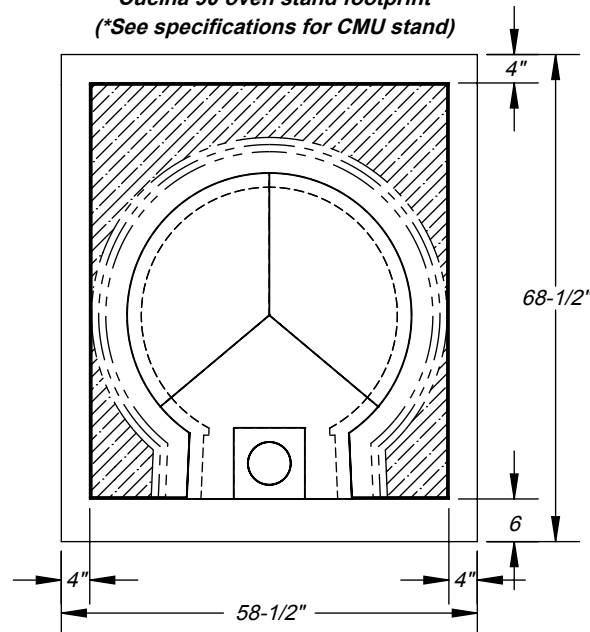
Finished slab should be 2" to 3" above ground level;

Refer to local building codes for recommendations regarding soil compaction, frost line and other considerations. Depending on local conditions, you may have to excavate down 18" or more of topsoil to reach stable substrate.

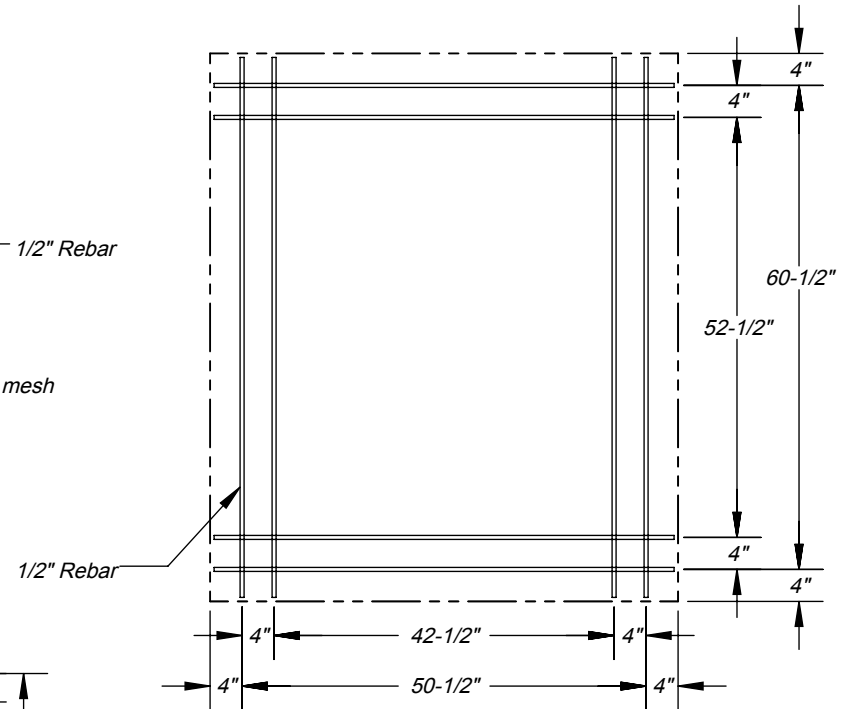
WARNING:

READ ALL INSTRUCTIONS IN INSTALLATION MANUAL BEFORE INSTALLING AND USING APPLIANCE. FAILURE TO FOLLOW INSTRUCTIONS MAY RESULT IN PROPERTY DAMAGE, BODILY INJURY OR EVEN DEATH.

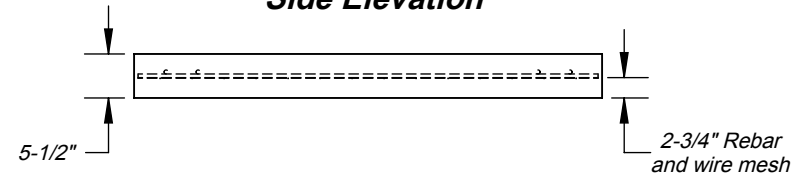
Cucina 90 oven stand footprint
(*See specifications for CMU stand)



Top View



Side Elevation



Made in the U.S.A. Residential Gas & Wood Fired Pizza Ovens

FORNO BRAVO®
THE WORLD'S FINEST PIZZA OVENS

Cucina 90
Gas or Wood Fired Pizza Oven Pad
Architect Drawings

Revision 8/11/2016

Sheet: 3 of 3



For more information: www.fornobravo.com
Installation guide: www.fornobravo.com/PDF/residential_install.pdf