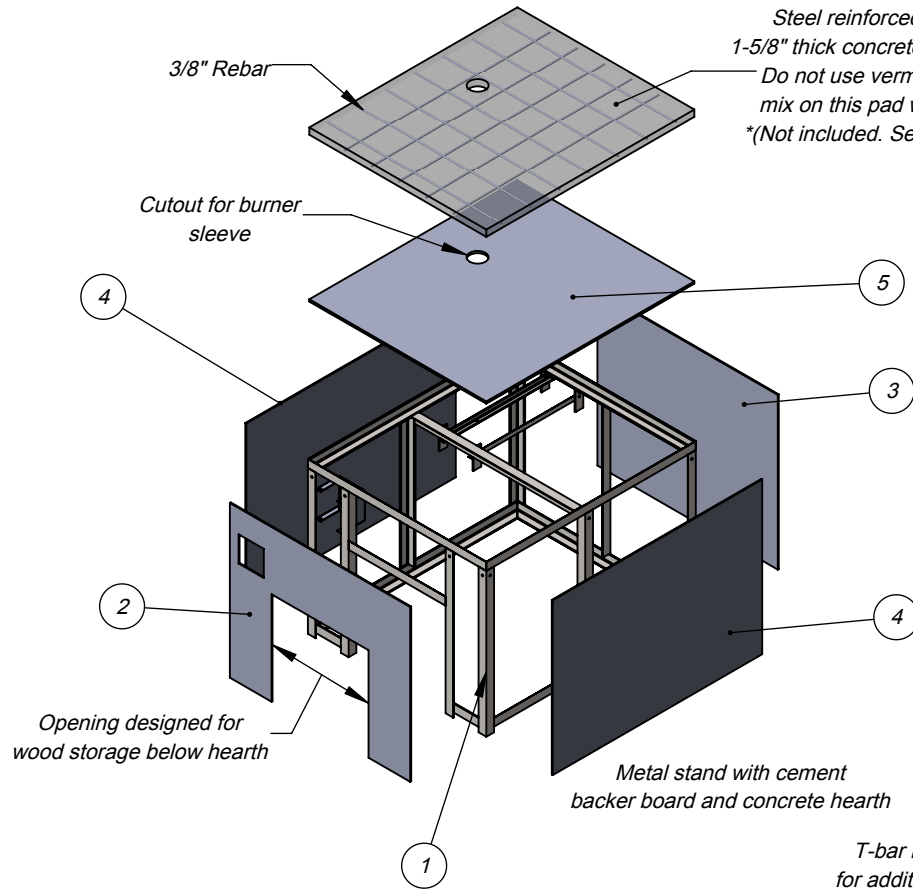


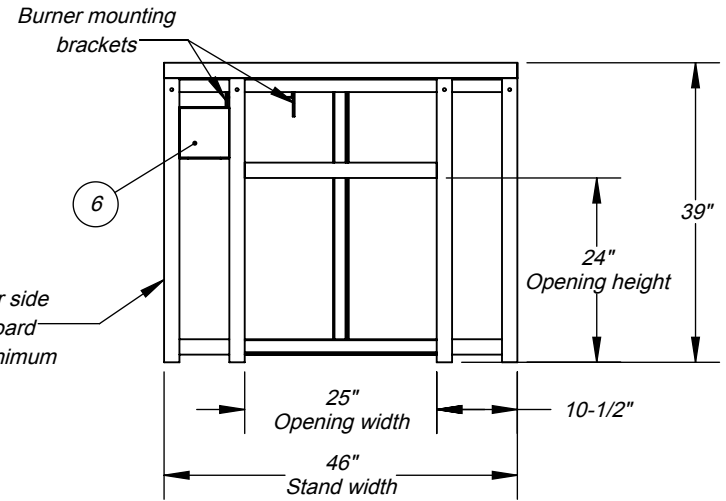
ISO View



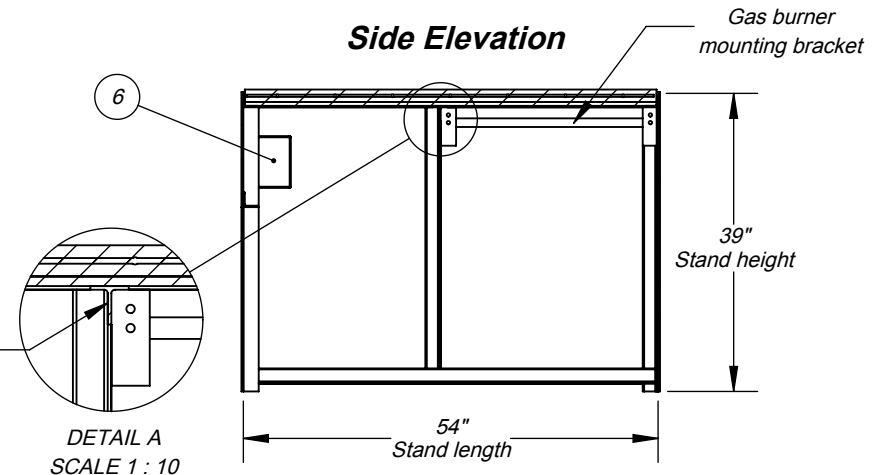
Steel reinforced hearth requires
1-5/8" thick concrete pad with 3/8" rebar.
Do not use vermiculite in concrete
mix on this pad with Cucina stand.
*(Not included. See installation guide)

Add 2-1/2" per side
for backer board
and facade minimum

Front View



Side Elevation



Specifications:

Stand includes metal frame, assembly hardware,
precut / predrilled exterior cement backer board panels.

The Cucina 80G stand works with Casa2G 80G oven.

* Hearth materials not included. See installation guide.

WARNING:
READ ALL INSTRUCTIONS IN INSTALLATION MANUAL BEFORE
INSTALLING AND USING APPLIANCE. FAILURE TO FOLLOW
INSTRUCTIONS MAY RESULT IN PROPERTY DAMAGE,
BODILY INJURY OR EVEN DEATH.

For more information: www.fornobravo.com

Installation guide: www.fornobravo.com/PDF/residential_install.pdf



Intertek



Intertek

ITEM#	PART NAME	DESCRIPTION	QTY
1	Cucina2G 80G	Metal frame substructure	1
2	Front Panel	1/4" Pre-cut Backer Board	1
3	Back Panel	1/4" Pre-cut Backer Board	1
4	Side Panel	1/4" Pre-cut Backer Board	2
5	Top Panel	1/2" Pre-cut Backer Board	1
6	Control Box Mount	Secures burner control unit	1
7	Hex Bolt, 3/8" x 1"	*Not displayed	10
8	Hex Nut, 3/8"	*Not displayed	10
9	Self Tapping Screw	*Not displayed	55
	*Concrete Hearth	* See installation guide	
	*Rebar	* See installation guide	

Made in the U.S.A. Residential Gas Fired Pizza Oven

FORNO BRAVO®
THE WORLD'S FINEST PIZZA OVENS

Cucina 80G
Gas Fired Pizza Oven Stand

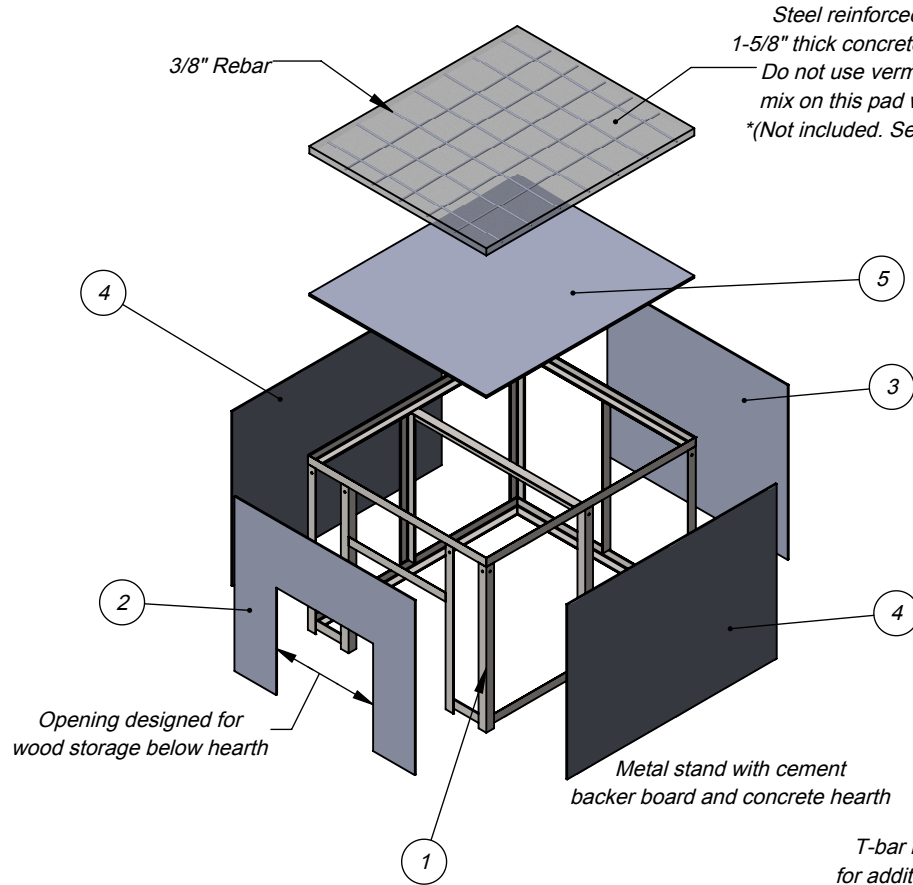
Architect Drawings

SKU: ICS80G

Revision 8/11/2016

Sheet: 1 of 3

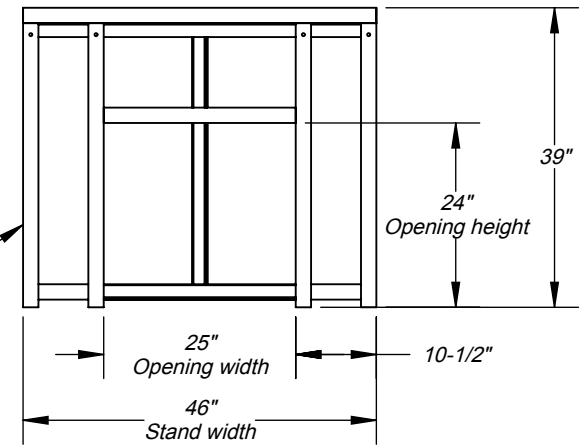
ISO View



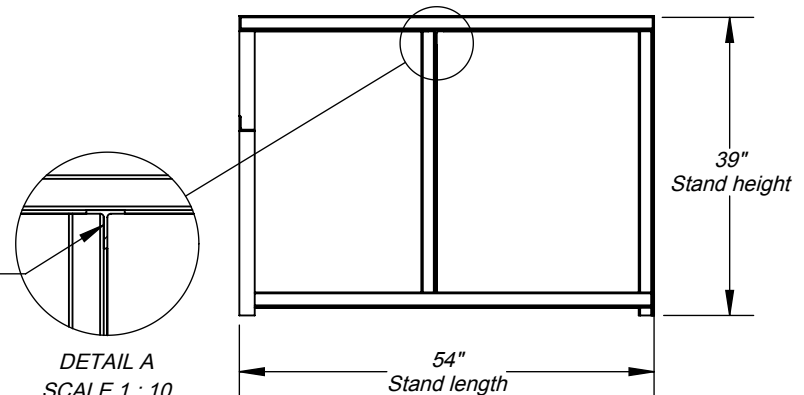
Steel reinforced hearth requires
1-5/8\" thick concrete pad with 3/8\" rebar.
Do not use vermiculite in concrete
mix on this pad with Cucina stand.
*(Not included. See installation guide)

Add 2-1/2\" per side
for backer board
and facade minimum

Front View



Side Elevation



DETAIL A
SCALE 1 : 10

Specifications:

Stand includes metal frame, assembly hardware,
precut / predrilled exterior cement backer board panels.

The Cucina 80W stand works with Casa2G 80W oven.

* Hearth materials not included. See installation guide.

WARNING:
READ ALL INSTRUCTIONS IN INSTALLATION MANUAL BEFORE
INSTALLING AND USING APPLIANCE. FAILURE TO FOLLOW
INSTRUCTIONS MAY RESULT IN PROPERTY DAMAGE,
BODILY INJURY OR EVEN DEATH.

For more information: www.fornobravo.com


Installation guide: www.fornobravo.com/PDF/residential_install.pdf



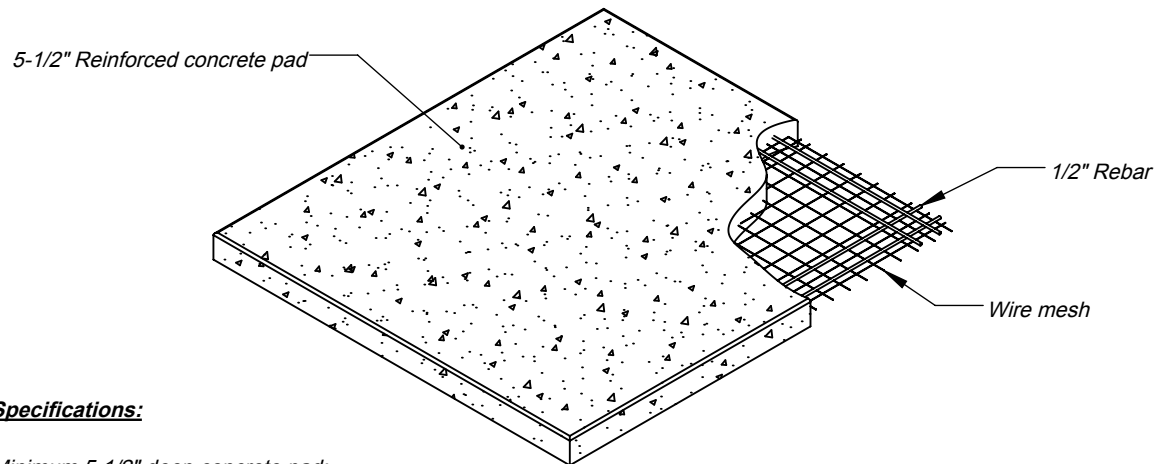
Intertek



Intertek

ITEM#	PART NAME	DESCRIPTION	QTY	Made in the U.S.A. Residential Wood Fired Pizza Oven	
1	Cucina2G 80W	Metal frame substructure	1	 FORNO BRAVO® THE WORLD'S FINEST PIZZA OVENS	
2	Front Panel	1/4\" Pre-cut Backer Board	1		
3	Back Panel	1/4\" Pre-cut Backer Board	1		
4	Side Panel	1/4\" Pre-cut Backer Board	2		
5	Top Panel	1/2\" Pre-cut Backer Board	1		
6	Hex Bolt, 3/8\" x 1\"	*Not displayed	10	Cucina 80W Wood Fired Pizza Oven Stand	
7	Hex Nut, 3/8\"	*Not displayed	10		
8	Self Tapping Screw	*Not displayed	55		
	*Concrete Hearth	* See installation guide			
	*Rebar	* See installation guide			
				Architect Drawings	SKU: ICS80W
				Revision 8/11/2016	Sheet: 2 of 3

ISO View



Specifications:

Minimum 5-1/2" deep concrete pad;

Reinforced with 1/2" rebar and wire mesh. * wire mesh is not shown in some views for print clarity;

Cut rebar and wire mesh short to conceal inside concrete pad;

*CMU stand requires a minimum cement foundation pad of 54"W x 57"D

Slab dimensions:

Minimum 8" wider than oven stand and hearth;

Minimum 10" deeper than oven stand and hearth;

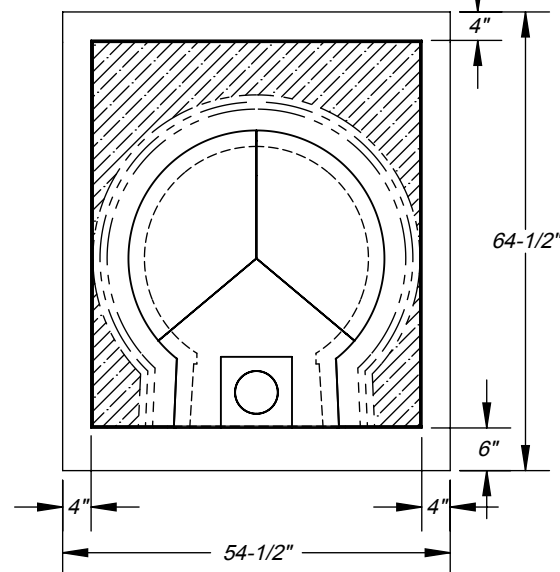
Finished slab should be 2" to 3" above ground level;

Refer to local building codes for recommendations regarding soil compaction, frost line and other considerations. Depending on local conditions, you may have to excavate down 18" or more of topsoil to reach stable substrate.

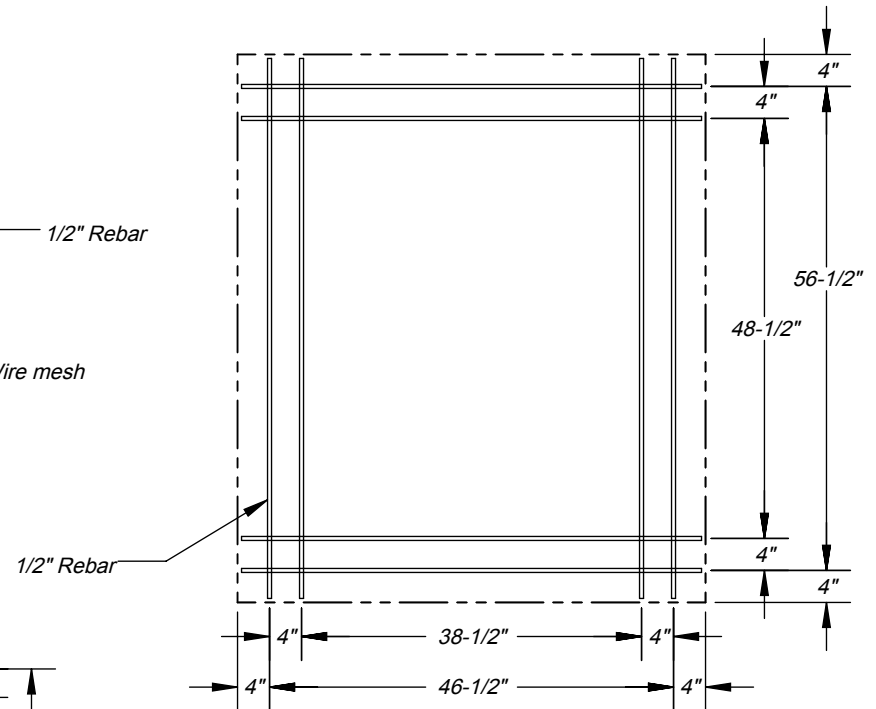
WARNING:

READ ALL INSTRUCTIONS IN INSTALLATION MANUAL BEFORE INSTALLING AND USING APPLIANCE. FAILURE TO FOLLOW INSTRUCTIONS MAY RESULT IN PROPERTY DAMAGE, BODILY INJURY OR EVEN DEATH.

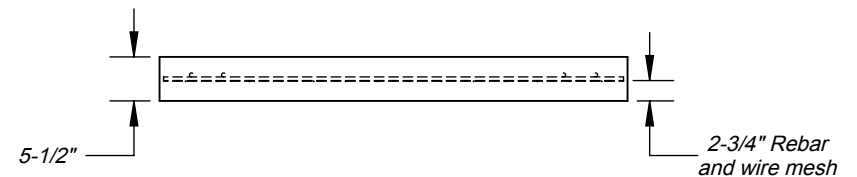
Cucina 80 oven stand footprint (*See specifications for CMU stand)



Top View



Side Elevation



For more information: www.fornobravo.com

Installation guide: www.fornobravo.com/PDF/residential_install.pdf



Made in the U.S.A. Residential Gas & Wood Fired Pizza Ovens

FORNO BRAVO®
THE WORLD'S FINEST PIZZA OVENS

Cucina 80
Gas or Wood Fired Pizza Oven Pad
Architect Drawings

Revision 8/11/2016

Sheet: 3 of 3