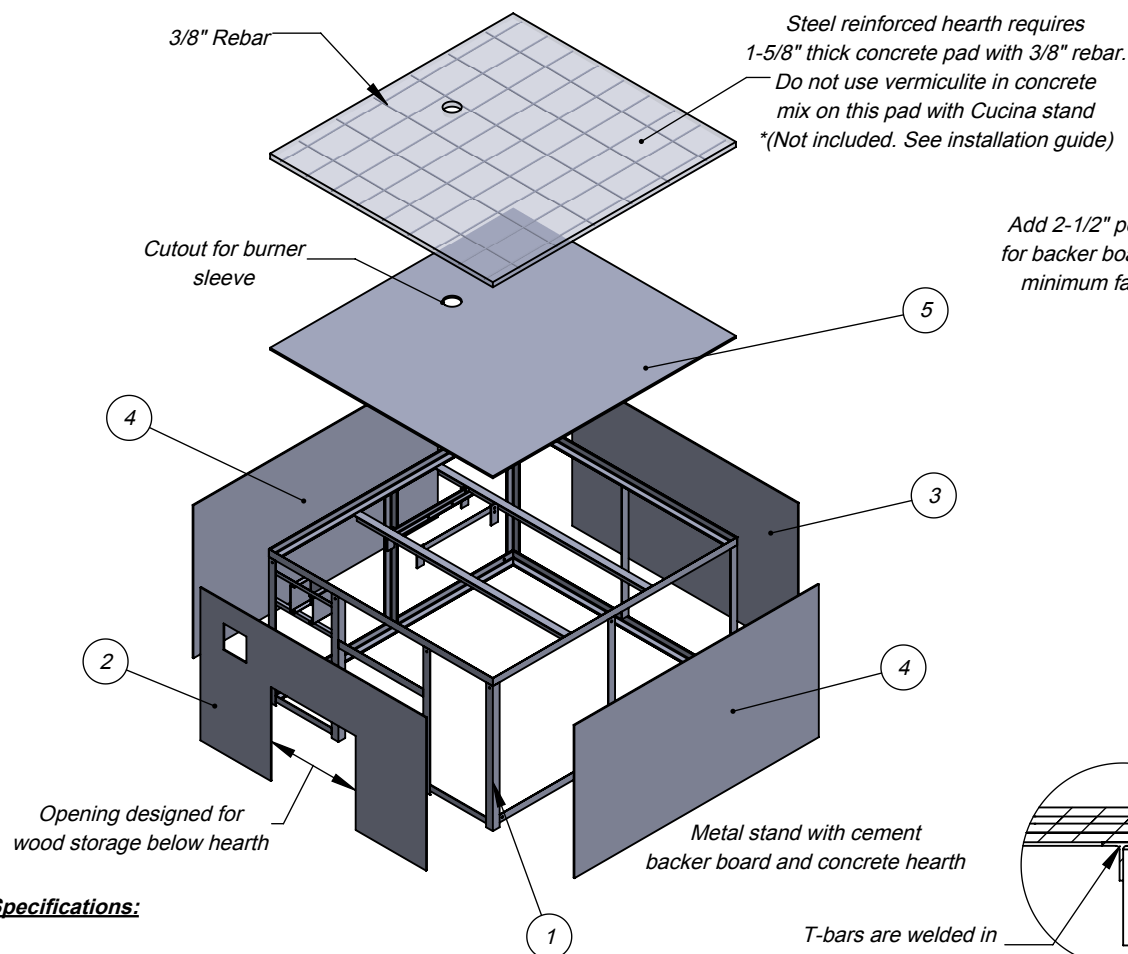


## ISO View



### Specifications:

Stand includes metal frame, assembly hardware, precut / predrilled exterior cement backer board panels.

The Cucina 130G stand works with Premio2G 120G oven.

\* Hearth materials not included. See installation guide.

### WARNING:

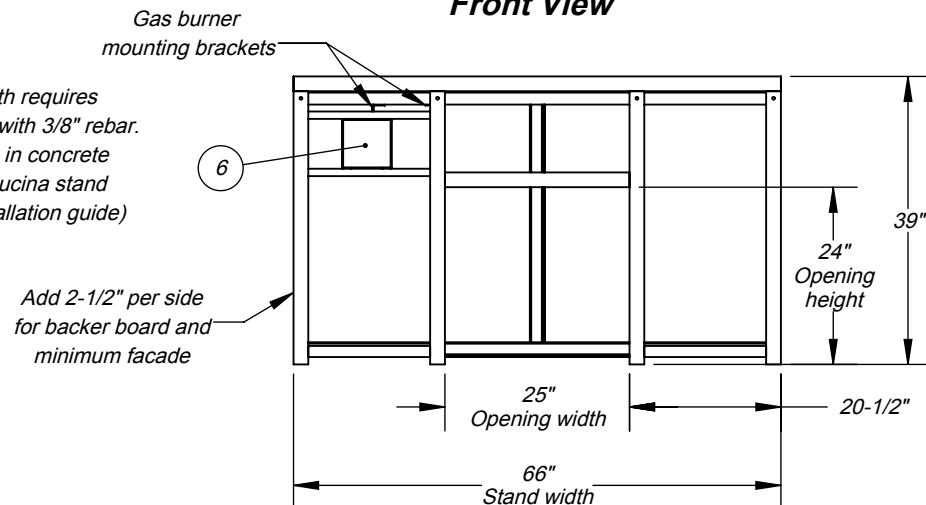
**READ ALL INSTRUCTIONS IN INSTALLATION MANUAL BEFORE INSTALLING AND USING APPLIANCE. FAILURE TO FOLLOW INSTRUCTIONS MAY RESULT IN PROPERTY DAMAGE, BODILY INJURY OR EVEN DEATH.**

For more information: [www.fornobravo.com](http://www.fornobravo.com)

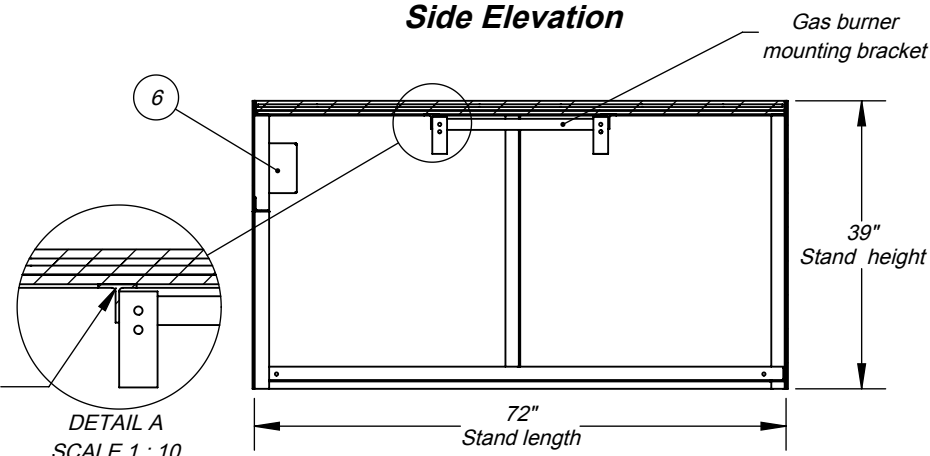
Installation guide: [www.fornobravo.com/PDF/residential\\_install.pdf](http://www.fornobravo.com/PDF/residential_install.pdf)



## Front View



## Side Elevation



ITEM#	PART NAME	DESCRIPTION	QTY
1	Cucina2G 130G	Metal frame substructure	1
2	Front Panel	1/4" Pre-cut Backer Board	1
3	Back Panel	1/4" Pre-cut Backer Board	1
4	Side Panel	1/4" Pre-cut Backer Board	2
5	Top Panel	1/2" Pre-cut Backer Board	1
6	Control Box Mount	Secures burner control unit	1
7	Hex Bolt, 3/8" x 1"	*Not displayed	10
8	Hex Nut, 3/8"	*Not displayed	10
9	Self Tapping Screw	*Not displayed	55
	*Concrete Hearth	* See installation guide	
	*Rebar	* See installation guide	

Made in the U.S.A. Residential Gas Fired Pizza Oven

**FORNO BRAVO®**  
THE WORLD'S FINEST PIZZA OVENS

**Cucina 130G**  
Gas Fired Pizza Oven Stand

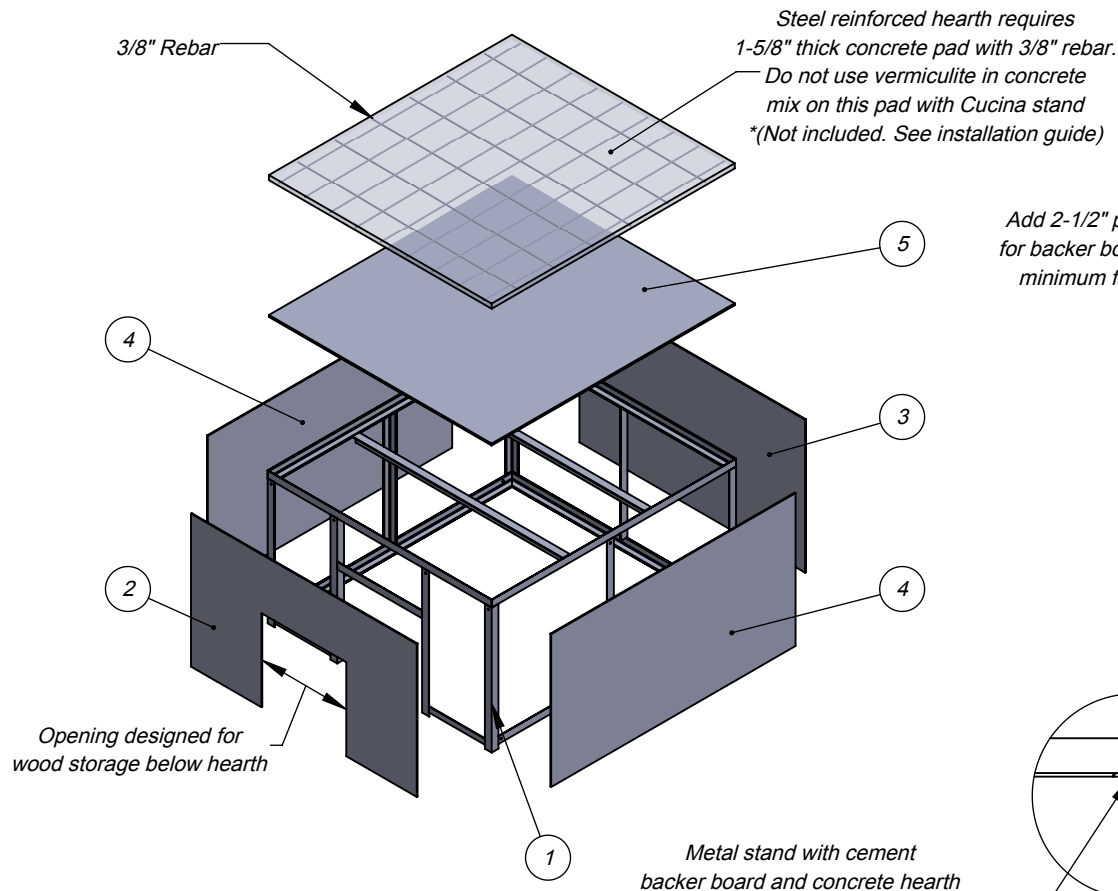
Architect Drawings

SKU: ICS130G

Revision 8/11/2016

Sheet: 1 of 3

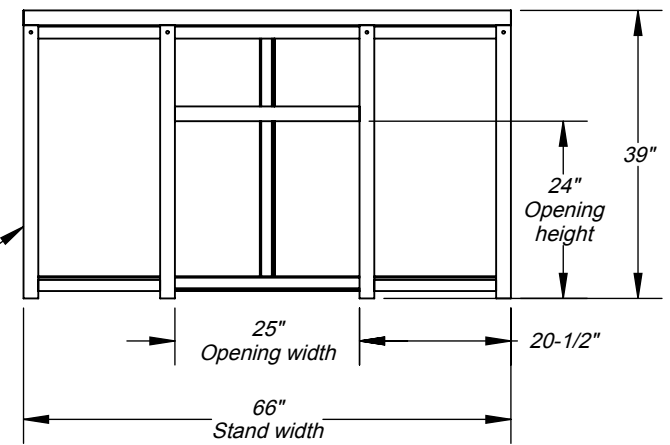
## ISO View



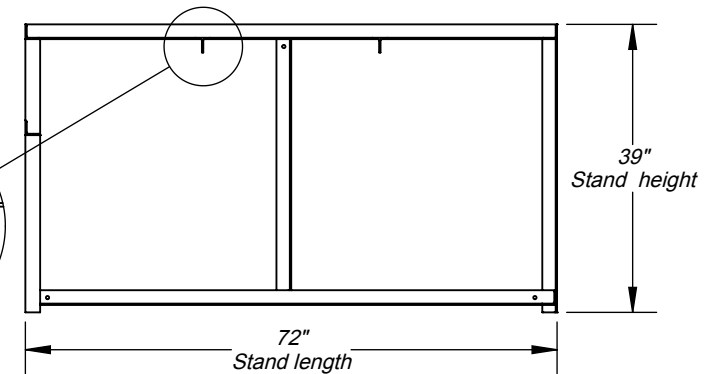
Metal stand with cement backer board and concrete hearth

T-bars are welded in for additional strength

## Front View



## Side Elevation



### Specifications:

Stand includes metal frame, assembly hardware, precut / predrilled exterior cement backer board panels.

The Cucina 130W stand works with Premio2G 120W oven.

\* Hearth materials not included. See installation guide.

### WARNING:

**READ ALL INSTRUCTIONS IN INSTALLATION MANUAL BEFORE INSTALLING AND USING APPLIANCE. FAILURE TO FOLLOW INSTRUCTIONS MAY RESULT IN PROPERTY DAMAGE, BODILY INJURY OR EVEN DEATH.**

For more information: [www.fornobravo.com](http://www.fornobravo.com)

Installation guide: [www.fornobravo.com/PDF/residential\\_install.pdf](http://www.fornobravo.com/PDF/residential_install.pdf)



ITEM#	PART NAME	DESCRIPTION	QTY
1	Cucina2G 130W	Metal frame substructure	1
2	Front Panel	1/4" Pre-cut Backer Board	1
3	Back Panel	1/4" Pre-cut Backer Board	1
4	Side Panel	1/4" Pre-cut Backer Board	2
5	Top Panel	1/2" Pre-cut Backer Board	1
6	Control Box Mount	Secures burner control unit	1
7	Hex Bolt, 3/8" x 1"	*Not displayed	10
8	Hex Nut, 3/8"	*Not displayed	10
9	Self Tapping Screw	*Not displayed	55
	*Concrete Hearth	* See installation guide	
	*Rebar	* See installation guide	

Made in the U.S.A. Residential Wood Fired Pizza Oven

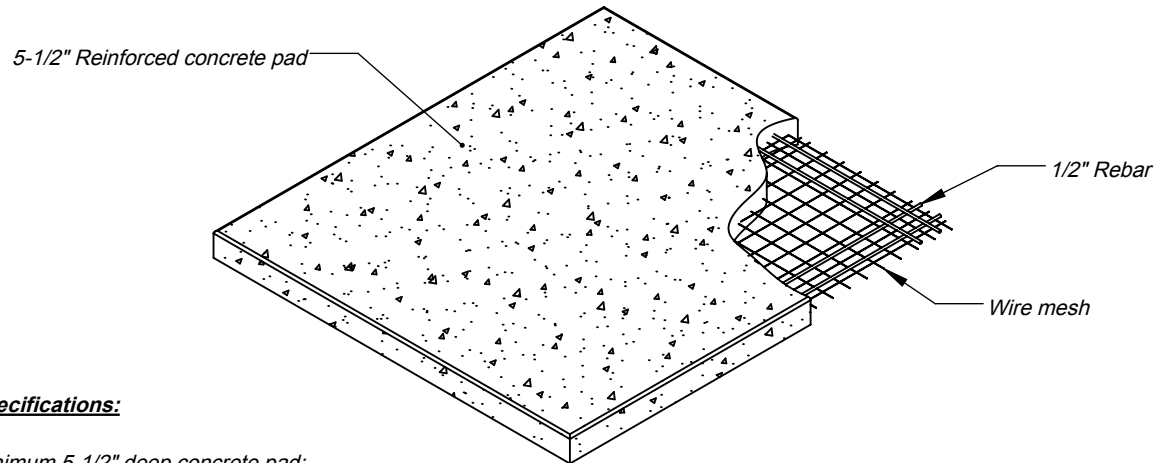
**FORNO BRAVO®**  
THE WORLD'S FINEST PIZZA OVENS

**Cucina 130W**  
Wood Fired Pizza Oven Stand  
Architect Drawings SKU: ICS130W

Revision 8/11/2016

Sheet: 2 of 3

## ISO View



### Specifications:

Minimum 5-1/2" deep concrete pad;

Reinforced with 1/2" rebar and wire mesh. \* wire mesh is not shown in some views for print clarity;

Cut rebar and wire mesh short to conceal inside concrete pad;

\*CMU stand requires a minimum cement foundation pad of 74"W x 75"D

### Slab dimensions:

Minimum 8" wider than oven stand and hearth;

Minimum 10" deeper than oven stand and hearth;

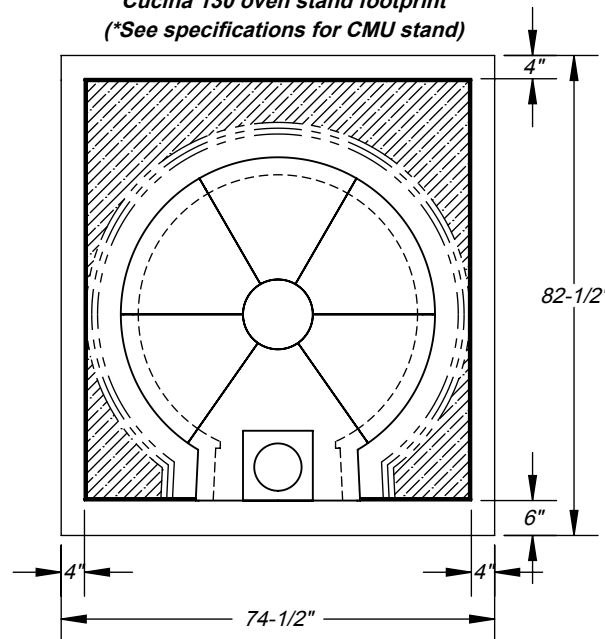
Finished slab should be 2" to 3" above ground level;

Refer to local building codes for recommendations regarding soil compaction, frost line and other considerations. Depending on local conditions, you may have to excavate down 18" or more of topsoil to reach stable substrate.

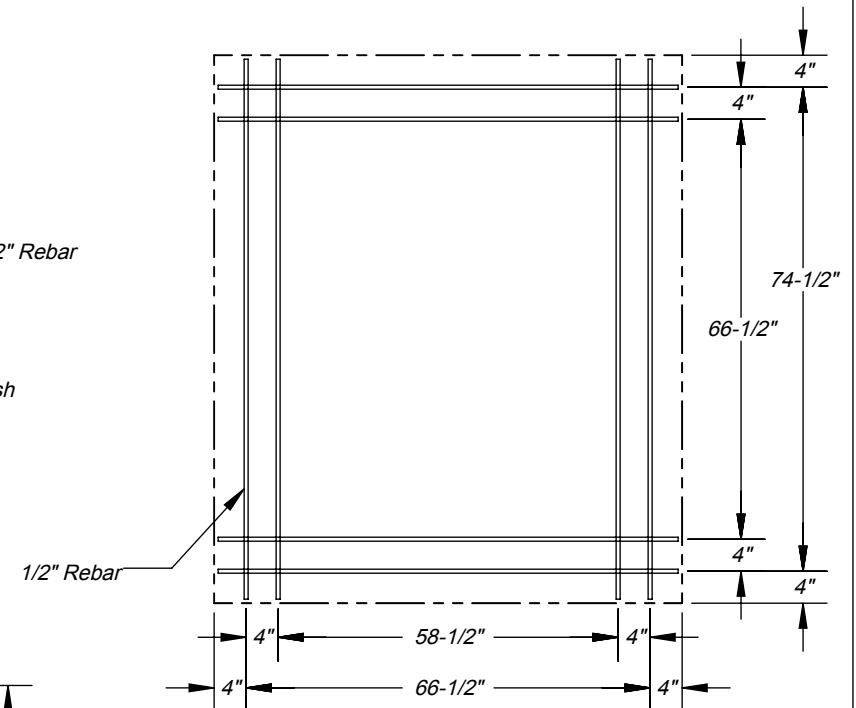
### WARNING:

READ ALL INSTRUCTIONS IN INSTALLATION MANUAL BEFORE INSTALLING AND USING APPLIANCE. FAILURE TO FOLLOW INSTRUCTIONS MAY RESULT IN PROPERTY DAMAGE, BODILY INJURY OR EVEN DEATH.

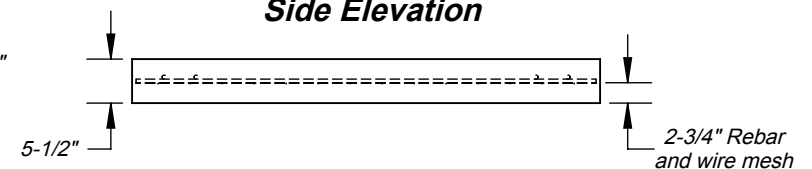
Cucina 130 oven stand footprint  
(\*See specifications for CMU stand)



## Top View



## Side Elevation



For more information: [www.fornobravo.com](http://www.fornobravo.com)

Installation guide: [www.fornobravo.com/PDF/residential\\_install.pdf](http://www.fornobravo.com/PDF/residential_install.pdf)



Made in the U.S.A.		Residential Gas & Wood Fired Pizza Ovens	
THE WORLD'S FINEST PIZZA OVENS			
Cucina 130			
Gas & Wood Fired Pizza Oven Pad			
Architect Drawings			
Revision 8/11/2016		Sheet: 3 of 3	