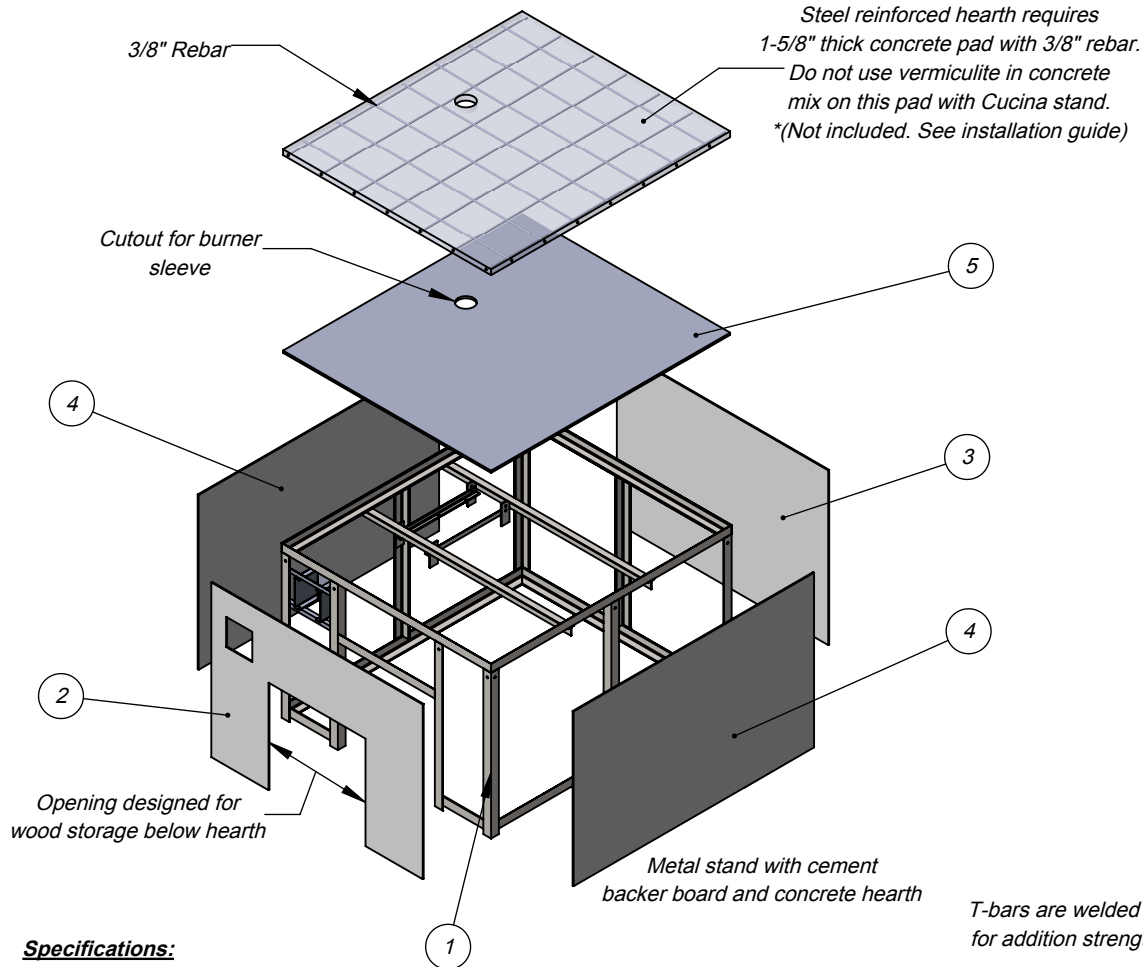
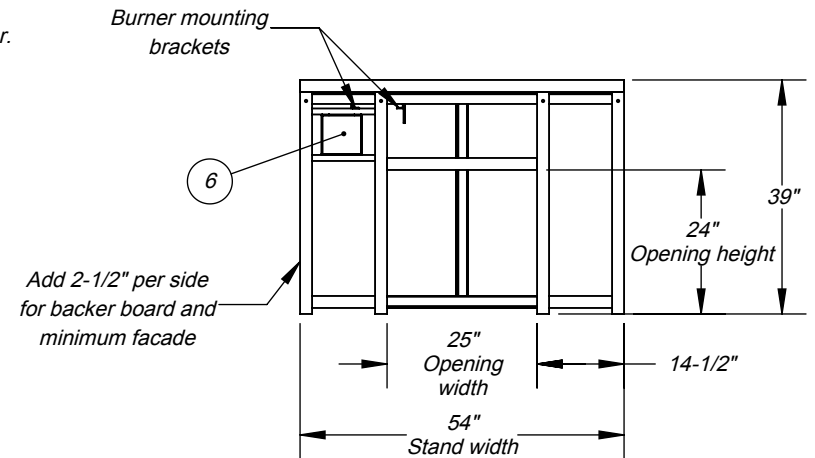


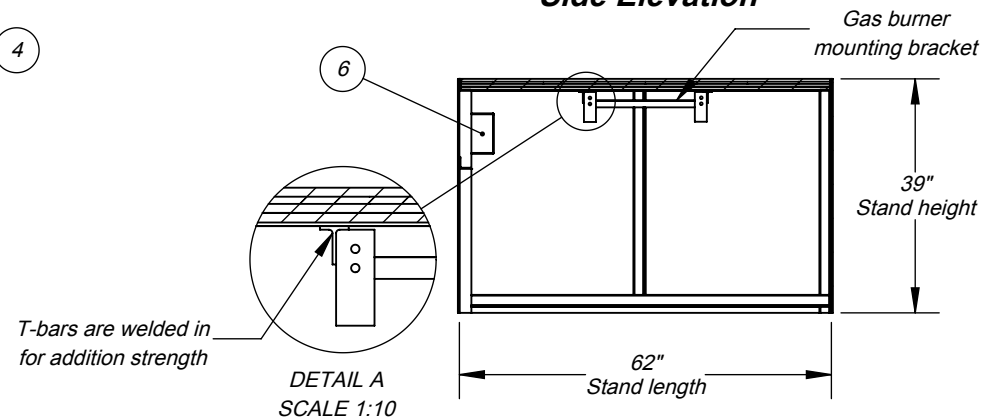
ISO View



Front View



Side Elevation



Specifications:

Stand includes metal frame, assembly hardware, precut / predrilled exterior cement backer board panels.

The Cucina 100G stand works with Casa2G 100G oven.

*Hearth materials not included. See installation guide.

WARNING:
READ ALL INSTRUCTIONS IN INSTALLATION MANUAL BEFORE INSTALLING AND USING APPLIANCE. FAILURE TO FOLLOW INSTRUCTIONS MAY RESULT IN PROPERTY DAMAGE, BODILY INJURY OR EVEN DEATH.

For more information: www.fornobravo.com

Installation guide: www.fornobravo.com/PDF/residential_install.pdf



ITEM#	PART NAME	DESCRIPTION	QTY
1	Cucina2G 100G	Metal frame substructure	1
2	Front Panel	1/4" Pre-cut Backer Board	1
3	Back Panel	1/4" Pre-cut Backer Board	1
4	Side Panel	1/4" Pre-cut Backer Board	2
5	Top Panel	1/2" Pre-cut Backer Board	1
6	Control Box Mount	Secures burner control unit	1
7	Hex Bolt, 3/8" x 1"	*Not displayed	10
8	Hex Nut, 3/8"	*Not displayed	10
9	Self Tapping Screw	*Not displayed	55
	*Concrete Hearth	* See installation guide	
	*Rebar	* See installation guide	

Made in the U.S.A. Residential Gas Fired Pizza Oven

FORNO BRAVO®
THE WORLD'S FINEST PIZZA OVENS

Cucina 100G
Gas Fired Pizza Oven Stand

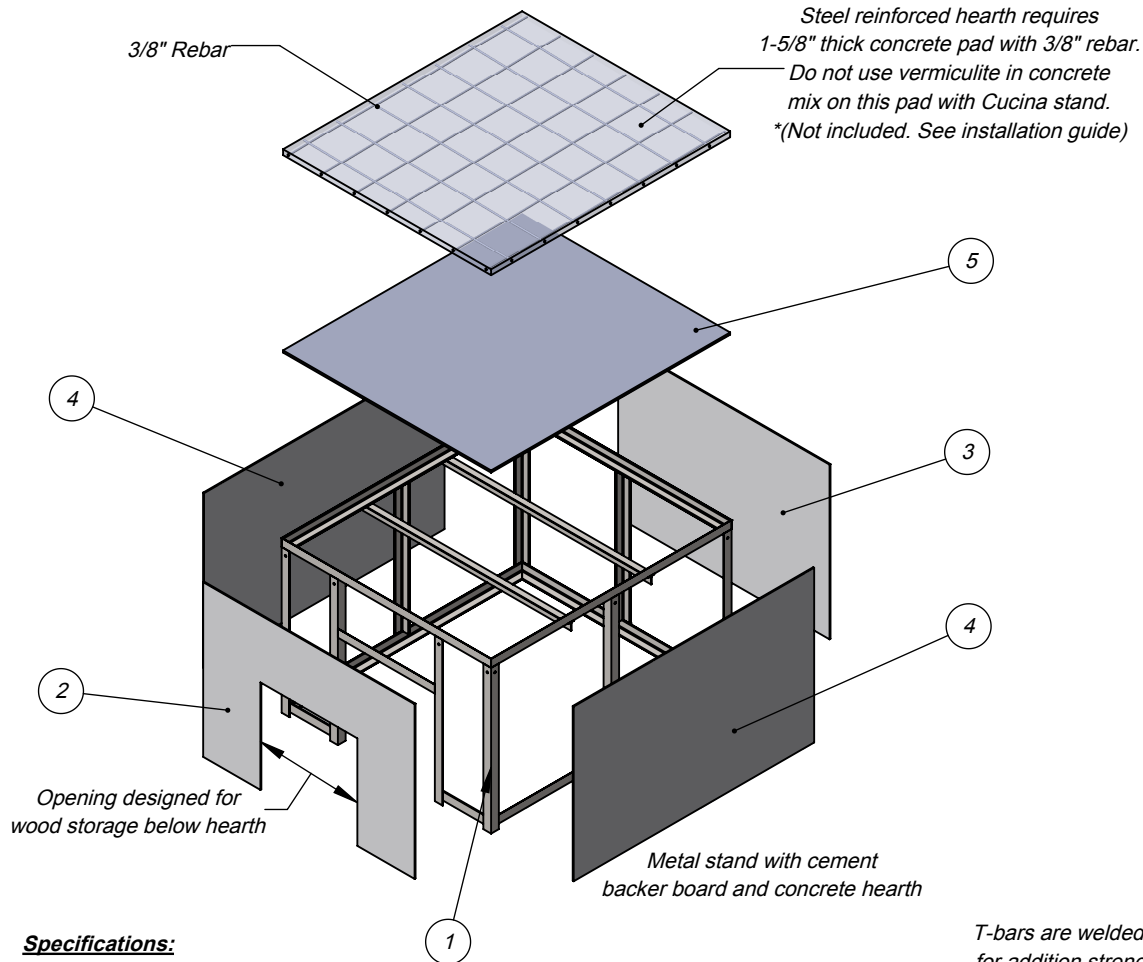
Architect Drawings

SKU: ICS100G

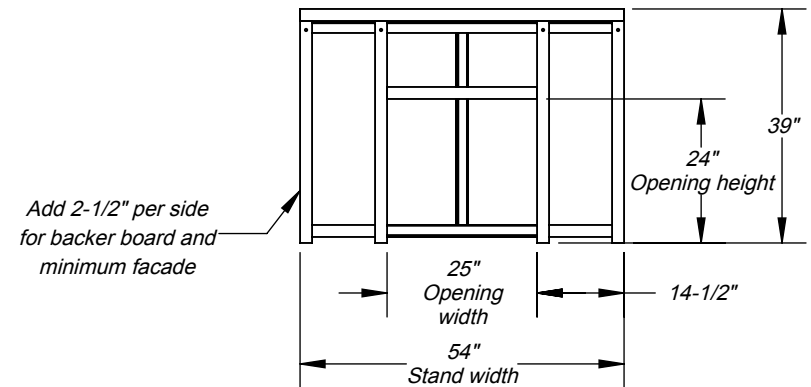
Revision 8/11/2016

Sheet: 1 of 3

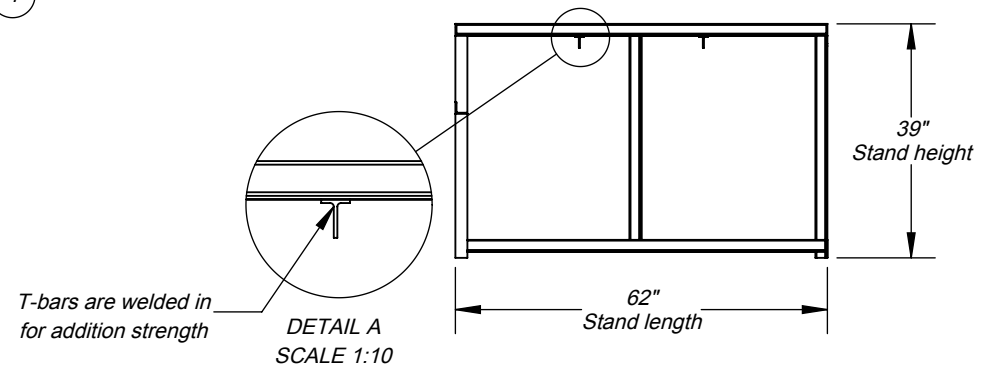
ISO View



Front View



Side Elevation



Specifications:

Stand includes metal frame, assembly hardware, pre-cut / predrilled exterior cement backer board panels.

The Cucina 100W stand works with Casa2G 100W oven.


* Hearth materials not included. See installation guide.

WARNING:
READ ALL INSTRUCTIONS IN INSTALLATION MANUAL BEFORE INSTALLING AND USING APPLIANCE. FAILURE TO FOLLOW INSTRUCTIONS MAY RESULT IN PROPERTY DAMAGE, BODILY INJURY OR EVEN DEATH.

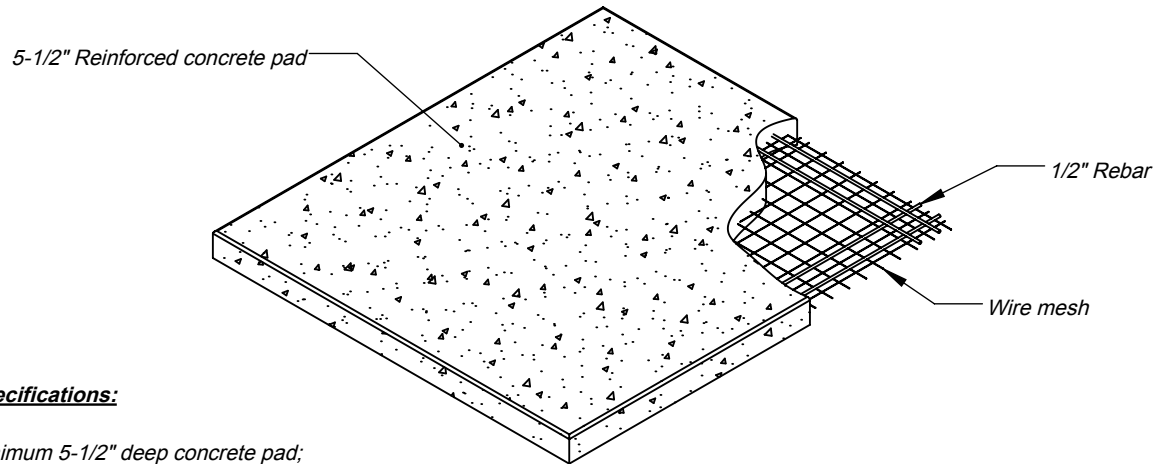
For more information: www.fornobravo.com

Installation guide: www.fornobravo.com/PDF/residential_install.pdf



ITEM#	PART NAME	DESCRIPTION	QTY	Made in the U.S.A. Residential Wood Fired Pizza Oven	
1	Cucina2G 100W	Metal frame substructure	1	 FORNO BRAVO® THE WORLD'S FINEST PIZZA OVENS Cucina 100W Wood Fired Pizza Oven Stand	
2	Front Panel	1/4" Pre-cut Backer Board	1		
3	Back Panel	1/4" Pre-cut Backer Board	1		
4	Side Panel	1/4" Pre-cut Backer Board	2		
5	Top Panel	1/2" Pre-cut Backer Board	1		
6	Hex Bolt, 3/8" x 1"	*Not displayed	10	Architect Drawings Revision 8/11/2016	
7	Hex Nut, 3/8"	*Not displayed	10		
8	Self Tapping Screw	*Not displayed	55		
	*Concrete Hearth	* See installation guide		SKU: ICS100W Sheet: 2 of 3	
	*Rebar	* See installation guide			

ISO View



Specifications:

Minimum 5-1/2" deep concrete pad;

Reinforced with 1/2" rebar and wire mesh. * wire mesh is not shown in some views for print clarity;

Cut rebar and wire mesh short to conceal inside concrete pad;

*CMU stand requires a minimum cement foundation pad of 62"W x 65"D

Slab dimensions:

Minimum 8" wider than oven stand and hearth;

Minimum 10" deeper than oven stand and hearth;

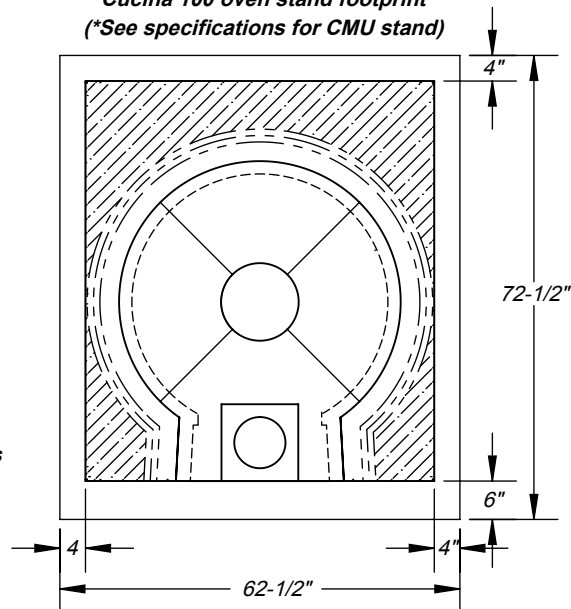
Finished slab should be 2" to 3" above ground level;

Refer to local building codes for recommendations regarding soil compaction, frost line and other considerations. Depending on local conditions, you may have to excavate down 18" or more of topsoil to reach stable substrate.

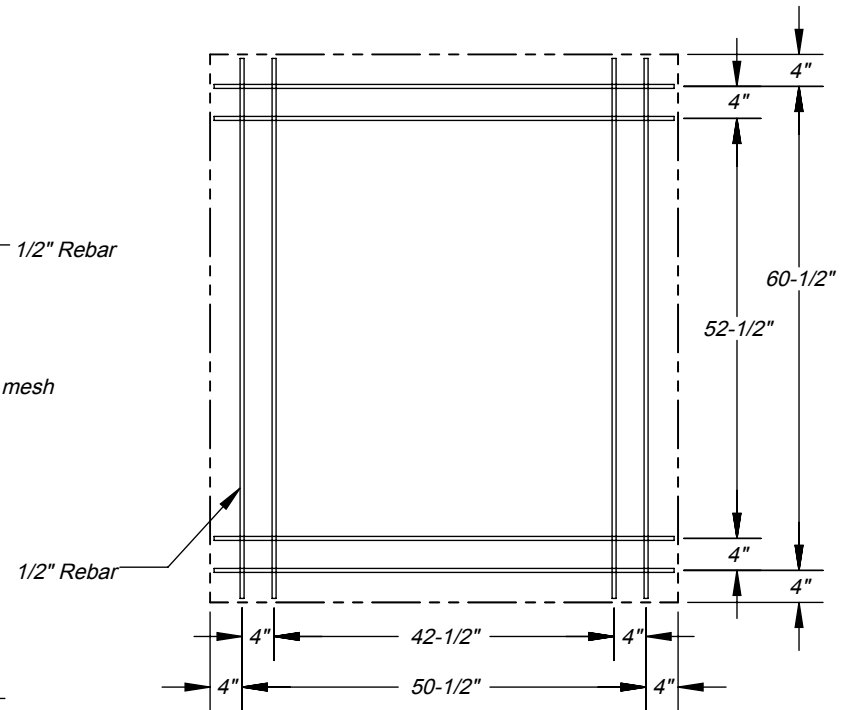
WARNING:

READ ALL INSTRUCTIONS IN INSTALLATION MANUAL BEFORE INSTALLING AND USING APPLIANCE. FAILURE TO FOLLOW INSTRUCTIONS MAY RESULT IN PROPERTY DAMAGE, BODILY INJURY OR EVEN DEATH.

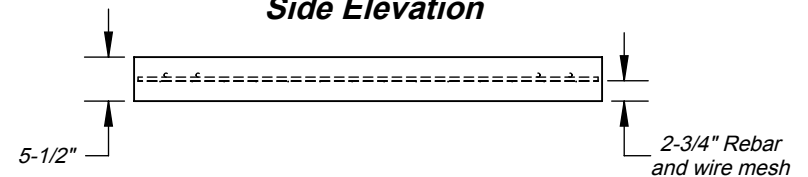
Cucina 100 oven stand footprint
(*See specifications for CMU stand)



Top View



Side Elevation



For more information: www.fornobravo.com

Installation guide: www.fornobravo.com/PDF/residential_install.pdf



Made in the U.S.A.	Residential Gas & Wood Fired Pizza Ovens
FORNO BRAVO® THE WORLD'S FINEST PIZZA OVENS	
Cucina 100 Gas or Wood Fired Pizza Oven Pad	
Architect Drawings	
Revision 8/11/2016	Sheet: 3 of 3